

Fine Jewellery, Watches & Silver, 18th Jun, 2026 09:30

- 1 A Victorian brooch, decorated with turquoise and foliate design to form the 'forget-me-not' style, with glazed compartment to the reverse with hair, measuring approximately 3.0 x 2.3 cm, testing as 18ct, weight 5.1 grams.
Please note: Unless otherwise stated, lots have been tested using an electronic tester. This is a surface test only and is not a guarantee of metal purity. **£200-300**



- 2 A Mid 19th-Century seed pearl suite, graduated seed pearls threaded to pierced mother-of-pearl backs, comprising a cross necklace, a pair of earring pendants (fittings deficient), and a brooch; the cross pendant measures 6.8 cm drop length, on 35.0 cm long seed pearl formed necklace with a tube clasp in yellow metal testing as 14ct, partially damaged with loose drilled pearls; the pendant of scrollwork design, measures 5.4 cm in length; and a brooch of circular form in swirl design, fittings testing as 14ct, 3.6 cm wide; Total weight of items 18.5 grams. (3)
Please note: Unless otherwise stated, lots have been tested using an electronic tester. This is a surface test only and is not a guarantee of metal purity. **£200-300**



- 3 A chrysoberyl and diamond halo ring, centred with a cat's eye chrysoberyl oval cabochon of 6.6mm x 5.3mm x 4.5mm, in a surround set with twelve old-cut diamonds, between tapered chenier shoulders, in unmarked metal testing as 18ct, ring head 1.1cm x 1.0cm, size K, 2.3 grams.
Please note: Unless otherwise stated, all diamond gradings are for guideline purposes only. All stones are graded within their mounts and results are subject to change following the stone(s) being unset. **£300-500**



- 4 A 9ct charm bracelet, set with three fob/charms, to include two twisting fob seals, one set with citrine, the other chrysoprase, and the third fob set with an amethyst, on an elongated link bracelet, with heart padlock, all 9ct gold, length approximately 18cm, weight 16.3 grams. **£300-500**



- 5 Two intaglios; to include, a carnelian intaglio pendant, carved with the initials 'IG' and a lion motif, in yellow metal, surface tested as 9ct, together with an agate intaglio seal, carved with script initials 'TR', in a gilt mount; total weighable, 6.5 grams.
Please note: Unless otherwise stated, lots have been tested using an electronic tester. This is a surface test only and is not a guarantee of metal purity. **£200-300**



Fine Jewellery, Watches & Silver, 18th Jun, 2026 09:30

- 6 An Etruscan Revival pendant set with citrine, of circular form, round-cut citrine measures 9.5 mm in diameter, in a bevelled surround decorated with twisted cables and granules, suspending from a tapered bail, unmarked yellow metal testing as 14ct, 3.9 cm drop length, 3.7 grams.
Please note: Unless otherwise stated, lots have been tested using an electronic tester. This is a surface test only and is not a guarantee of metal purity. **£200-300**



- 7 A Victorian mourning brooch, in a 'woven' design, decorated with graduated turquoise, with glazed compartment to the reverse, with a pin and hook fitting, testing as 18ct, measuring 5.0 x 3.5 cm, weight 22.6 grams.
Please note: Unless otherwise stated, lots have been tested using an electronic tester. This is a surface test only and is not a guarantee of metal purity. **£800-1,200**



- 8 A 9ct rose gold fob chain, composed of a graduating curb-link chain, each link stamped '375' completed with a 9ct rose gold lobster clasp, with a 9ct rose gold T Bar and a rose metal fob detailed with a one-sided onyx swivel panel, stamped '9ct', chain measuring 34.5cm in length, 43.5 grams. **£1,000-2,000**



- 9 An Early Victorian emerald and diamond bangle, featuring an emerald-cut emerald and a cushion-shaped emerald, both of vivid green colour, both in claw settings, the bangle centrally claw-set with an old-cut diamond, with an estimated carat weight of 0.42ct, with two smaller claw-set old-cut diamonds, the bangle in yellow metal surface testing as 18ct, inner circumference approximately 16.0cm, completed with an integral box-clasp and additional safety chain, boxed, 9.0 grams.
Please note: Unless otherwise stated, lots have been tested using an electronic tester. This is a surface test only and is not a guarantee of metal purity.
Please note: Unless otherwise stated, all diamond gradings are for guideline purposes only. All stones are graded within their mounts and results are subject to change following the stone(s) being unset. **£1,000-1,500**



Fine Jewellery, Watches & Silver, 18th Jun, 2026 09:30

- 10 A pair of cufflinks, the oval domed heads engraved with a family crest depicting a Saracens' head on coronet, and a monogram on the other, connected with a trombone bar fitting, yellow metal stamped '18', head measures 1.8cm x 1.2cm each, 14.7 grams. **£800-1,200**



- 11 A garnet-set mourning brooch, centred with a gilt pull-off compartment collet-set with a garnet cabochon, in a black enamel surround with embossed scrollwork border, inscription to the reverse and later-added brooch fittings, unmarked yellow metal testing as 14ct (locket compartment in gilt), 5.0 cm wide, 17.2 grams weighable.
Please note: Unless otherwise stated, lots have been tested using an electronic tester. This is a surface test only and is not a guarantee of metal purity. **£400-600**



- 12 A collection of 19th Century seed pearl jewellery, including a pendant necklace, a stick pin, a brooch of en tremblant design, a pendant in the form of a bow and a wreath style brooch set with pearls and blue pastes, total weight 22.8 grams. **£200-300**



- 13 A diamond-set bar brooch, featuring a central old-cut diamond-set cluster of floral design, flanked each side by elongated pear-shaped white metal bars, to pin fitting and locking C clasp, with additional safety chain, brooch measuring 5.0cm in length, brooch surface testing as 18ct, pin surface testing as 9ct, 3.7 grams.
Please note: Unless otherwise stated, lots have been tested using an electronic tester. This is a surface test only and is not a guarantee of metal purity. **£200-300**



- 14 A diamond gypsy ring, flush-set with three old mine-cut diamonds in a worn starburst setting, stamped '18CT', ring size approximately Q-S (band mishappen), weight 2.1 grams.
Please note: Unless otherwise stated, all diamond gradings are for guideline purposes only. All stones are graded within their mounts and results are subject to change following the stone(s) being unset. **£120-180**



Fine Jewellery, Watches & Silver, 18th Jun, 2026 09:30

- 15 A 19th century portrait miniature, English school, featuring an ivory oval panel, painted with a portrait of a lady in mourning, unsigned, to a foliate repousse mount in gilt metal, with conforming bail, and a glazed hairwork panel to the reverse, measuring approximately 9.00cm x 6.00cm (including bail), 59.5 grams. IVORY EXEMPTION CERTIFICATE NUMBER: VDAUGKSE **£200-300**



- 16 An Early Victorian mourning fichu pin, of rectangular form with repousse scrolls, centred with a glazed hairwork panel, brooch fittings and engravings to verso, yellow metal testing as 18ct, 2.5 cm long, 3.5 grams.
Please note: Unless otherwise stated, lots have been tested using an electronic tester. This is a surface test only and is not a guarantee of metal purity. **£100-200**



- 17 A diamond half eternity ring, set with nine round brilliant-cut diamonds, in a cut-down claw setting, the head of the ring unmarked, surface testing as platinum, the shank in 18ct yellow gold, ring size O, weight 3.5 grams.
Please note: Unless otherwise stated, lots have been tested using an electronic tester. This is a surface test only and is not a guarantee of metal purity.
Please note: Unless otherwise stated, all diamond gradings are for guideline purposes only. All stones are graded within their mounts and results are subject to change following the stone(s) being unset. **£300-500**



- 18 A sapphire and diamond cluster ring in 18ct gold, centred with an oval-cut dark blue sapphire of 6.6mm x 5.3mm x 3.6mm, in a diamond-set surround with an estimated total weight of 0.45ct, between floral shoulders to a D-profile shank, British assay marks, ring head 1.4cm x 1.1cm, size M, 4.1 grams.
Please note: Unless otherwise stated, all diamond gradings are for guideline purposes only. All stones are graded within their mounts and results are subject to change following the stone(s) being unset. **£300-500**



- 19 A pair of Edwardian cufflinks in 9ct yellow gold, the oval panels connected by cable links, one engraved with monogram and the other with two family crests depicting birds, by G H Johnstone & Co., Birmingham 1906, 8.5 grams. **£200-300**



Fine Jewellery, Watches & Silver, 18th Jun, 2026 09:30

- 20 A late Victorian diamond and ruby brooch, of scrolled foliate design, the openwork mount encrusted with old-cut diamonds and rose-cut diamond points, centred with a cushion-cut ruby in collet with twisted cable edge, measures 6.7 x 4.7 mm, unmarked metal surface testing as silver on 18ct, 4.6 x 2.7 cm, 12.9 grams.
Please note: Unless otherwise stated, lots have been tested using an electronic tester. This is a surface test only and is not a guarantee of metal purity. **£500-700**



- 21 A smoky quartz cross pendant, constructed by faceted smoky quartz/rock crystals, set in coronet mounts, suspending from a loop bail, unmarked yellow metal testing as 14ct, 8.0 x 4.5 cm, 26.8 grams.
Please note: Unless otherwise stated, lots have been tested using an electronic tester. This is a surface test only and is not a guarantee of metal purity. **£300-500**



- 22 Two Victorian Brooches; The first in 9ct gold set with a seed pearl and two red accent stones, the reverse featuring a vacant cartouche (unglazed), to a base metal pin, brooch measuring 4.0cm x 1.5cm, Birmingham 1895, 2.4 grams; The second in 15ct gold set with three seed pearl accents (one deficient), brooch measuring 3.1cm x 1.3cm, to base metal pin, Chester 1890, 2.4 grams. (2). **£150-250**



- 23 A Victorian diamond spray brooch, of foliate design, depicting flower heads and leaves, all mounted with old mine-cut diamonds, claw-set, with pin and hook fitting, measuring approximately 4.3cm x 2.0cm, unmarked but surface testing as 18ct to the back and silver to the front (later gilt), weight 8.1 grams.
Please note: Unless otherwise stated, lots have been tested using an electronic tester. This is a surface test only and is not a guarantee of metal purity. **£300-500**



- 24 A Victorian Etruscan revival mourning gem-set brooch/pendant and earring suite, the central gypsy-set rose-cut diamond, flanked by similarly-set circular-cut sapphires, with beading and ropetwist detail throughout, stamped 15ct, together with a pair of earrings en suite, to hook posts, brooch length 4.2cm, earring length 1.3cm, gross weight 4.87gms (2) **£200-300**



Fine Jewellery, Watches & Silver, 18th Jun, 2026 09:30

- 25 A Victorian gem-set bee dress ring, the ring head in the form of a bee, encrusted with rose-cut diamonds and ruby accents as eyes, to an engraved tapering shank, ring head testing as silver, measuring 1.4 cm wide, shank testing as 14ct, size N½, 1.9 grams.
Please note: Unless otherwise stated, all diamond gradings are for guideline purposes only. All stones are graded within their mounts and results are subject to change following the stone(s) being unset. **£300-500**



- 26 A Victorian mourning brooch, in the Etruscan-Revival style, decorated with granulated details and twisted cables, a glazed woven hair panel to the reverse, with a pin and hook fitting, the brooch measures approximately 5.0cm x 4. cm, unmarked, surface testing as 9ct, weight 12.2 grams.
Please note: Unless otherwise stated, lots have been tested using an electronic tester. This is a surface test only and is not a guarantee of metal purity. **£200-300**



- 27 A signet ring, set with an oval sardonyx intaglio with engraved letter "D", to a tapering band of yellow gold, British Hallmarks for 18ct, size K 1/2, 3.81 grams. **£200-300**



- 28 An amethyst and diamond bar brooch, the cabochon amethyst star-set with a small rose-cut diamond, in a bezel setting, soldered onto a bar brooch with hallmarks, 9ct Chester 1924, brooch length approximately 5.0cm, weight 4.6 grams. **£300-500**



- 29 An Edwardian lily of the valley brooch, the spray motif encrusted with split pearls and ribbon tied to the end, applied to an oval frame, brooch fittings to the reverse, yellow metal marked '15ct', 3.2 cm wide, 4.7 grams. **£300-500**



Fine Jewellery, Watches & Silver, 18th Jun, 2026 09:30

- 30 An Edwardian pearl and tourmaline pendant, with a central pink tourmaline, in a foliate surround decorated with seed pearls, stamped '9ct', the pendant measures approximately 3.5cm x 3.0cm, weight 3.0 grams. **£200-300**



- 31 An Edwardian amethyst and seed pearl brooch, centred with an oval-cut amethyst of 19.7mm x 15.6mm x 10.9mm, collet-set within a seed pearl surround, brooch fittings to the back, unmarked yellow metal testing as 9ct, 2.38 cm wide, 9.6 grams.
Please note: Unless otherwise stated, lots have been tested using an electronic tester. This is a surface test only and is not a guarantee of metal purity. **£100-150**



- 32 A Victorian diamond-set ring, set with five old mine-cut diamonds, the largest measuring approximately 2.5mm, with engraved scrolling design to shoulders, in yellow metal stamped "15", size N, 3.07 grams.
Please note: Unless otherwise stated, all diamond gradings are for guideline purposes only. All stones are graded within their mounts and results are subject to change following the stone(s) being unset. **£200-300**



- 33 An Edwardian peridot and seed pearl pendant, of circular panel form constructed by an array of knife-edge bars, edged with a crescent-set with a row of graduated seed pearls, centred with an applied scroll foliate framing a peridot accent, on a conforming foliate bail, in yellow metal marked '9ct', 3.6cm drop, 3.1 grams. **£300-500**



- 34 An opal and diamond brooch, of openwork design, the millegrain collet-set circular cabochon opal, to similarly-set old brilliant-cut diamonds at each cardinal point, approximately 0.20ct total, to elongated arms with scroll detail, mounted in yellow 15ct gold, stamped with Chester hallmark, length 4.4cm, gross weight 3.82grams **£200-300**



Fine Jewellery, Watches & Silver, 18th Jun, 2026 09:30

- 35 An opal and diamond half-hoop ring, comprising three graduated round opal cabochons, interspersed with single-cut diamonds, leading to yellow metal shank testing as 18ct, size Q, 3.3 grams.
Please note: Unless otherwise stated, lots have been tested using an electronic tester. This is a surface test only and is not a guarantee of metal purity. **£200-300**



- 36 A ruby and peridot brooch, of circular foliate design, with an articulated pear shaped peridot drop and fine wirework decoration, with pin and hook brooch fitting to the reverse, unmarked, surface testing as 18ct, the brooch measures approximately 4.0cm x 2.5cm, weight 4.4 grams.
Please note: Unless otherwise stated, lots have been tested using an electronic tester. This is a surface test only and is not a guarantee of metal purity. **£300-500**



- 37 An Early 20th Century opal five stone ring, in a claw setting, bearing Birmingham assay marks for 1919 and 18ct gold, ring size M, weight 2.8 grams. **£300-500**



- 38 Two brooches, comprising a butterfly brooch in yellow metal surface testing as 14ct, together with another brooch, centrally-set with pink paste, in yellow metal surface testing as 10ct; 4.0 grams (2).
Please note: Unless otherwise stated, lots have been tested using an electronic tester. This is a surface test only and is not a guarantee of metal purity. **£200-300**



- 39 A pair of Art Nouveau chain clufflinks, featuring the seasons personified, each decorated with the form of a woman and signed 'le printemps, l'été, l'automne, l'hiver' for Spring, Summer, Autumn and Winter, engraved to the reverse 'Dorothy April-December 25 1915', surface testing as 18ct, weight 8.7 grams.
Please note: Unless otherwise stated, lots have been tested using an electronic tester. This is a surface test only and is not a guarantee of metal purity. **£400-600**



Fine Jewellery, Watches & Silver, 18th Jun, 2026 09:30

- 40 A late Victorian old-cut diamond five stone ring, featuring five graduating old-cut diamonds, in claw settings, to an 18ct gold ring shank, ring size L, Birmingham 1900, 3.1 grams.
Please note: Unless otherwise stated, all diamond gradings are for guideline purposes only. All stones are graded within their mounts and results are subject to change following the stone(s) being unset. **£400-600**



- 41 A Victorian emerald and diamond bangle, with a diamond-set horseshoe motif to the centre, the horseshoe motif highlighted by emerald and diamond-set foliate designs, estimated total old-cut diamond carat weight 2.68ct, with tongue and clip clasp and safety chain, unmarked but surface testing as 14ct, inner bangle diameter 4.8 cm (suitable for a smaller wrist size), weight 13.3 grams.
Please note: Unless otherwise stated, lots have been tested using an electronic tester. This is a surface test only and is not a guarantee of metal purity.
Please note: Unless otherwise stated, all diamond gradings are for guideline purposes only. All stones are graded within their mounts and results are subject to change following the stone(s) being unset. **£700-900**



- 42 A sapphire and diamond ring, featuring two rows of alternating graduating old-cut diamonds and sapphires, of checkerboard design, all grain-set in 18ct yellow gold, to an 18ct yellow gold ring shank, ring size O, 4.4 grams.
Please note: Unless otherwise stated, all diamond gradings are for guideline purposes only. All stones are graded within their mounts and results are subject to change following the stone(s) being unset. **£800-1,200**



- 43 An old-cut diamond and sapphire hinged bangle, featuring eight graduating old-cut diamonds, each interspersed with a round-cut blue sapphire, all claw-set in yellow metal surface testing as 18ct, to a double-bar hinged oval bangle in yellow metal surface testing as 14ct, inner circumference approximately 16.5cm, completed with an integral box clasp and additional safety chain, 15.7 grams.
Please note: Unless otherwise stated, lots have been tested using an electronic tester. This is a surface test only and is not a guarantee of metal purity.
Please note: Unless otherwise stated, all diamond gradings are for guideline purposes only. All stones are graded within their mounts and results are subject to change following the stone(s) being unset. **£2,500-3,500**



Fine Jewellery, Watches & Silver, 18th Jun, 2026 09:30

- 44 A sapphire and diamond crossover ring, claw-set with a circular-cut sapphire of 5.8mm x 5.8mm x 2.8mm, between two old-cut diamonds, with an estimated total weight of 0.72ct, between bypass shoulders to tapering shank, in white metal stamped '18&PLAT', size N½, 3.8 grams.
Please note: Unless otherwise stated, all diamond gradings are for guideline purposes only. All stones are graded within their mounts and results are subject to change following the stone(s) being unset. **£500-700**



- 45 A white sapphire full eternity ring, featuring twenty-six round-cut white sapphires, grain-set in a white and yellow metal band, surface testing as platinum and 14ct, ring size P, 2.7 grams.
Please note: Unless otherwise stated, lots have been tested using an electronic tester. This is a surface test only and is not a guarantee of metal purity.
Please note: Unless otherwise stated, all diamond gradings are for guideline purposes only. All stones are graded within their mounts and results are subject to change following the stone(s) being unset. **£200-300**



- 46 A ruby and diamond trilogy ring; set with an oval cut ruby of 6.00 x 5.00 mm and an estimated 0.76ct, flanked to either side by round brilliant cut diamonds of approximately 3.00mm each, in prong settings and chenier shoulders of white metal, to a yellow metal shank, stamped "18ct", size L, 2.8 grams.
Please note: Unless otherwise stated, all diamond gradings are for guideline purposes only. All stones are graded within their mounts and results are subject to change following the stone(s) being unset. **£300-500**



- 47 A diamond solitaire ring, featuring a claw-set round brilliant-cut diamond of estimated 0.43ct, flanked by shoulders each collet-set with three graduating single-cut diamonds, to an 18ct white gold ring shank, ring size S, 3.4 grams.
Please note: Unless otherwise stated, all diamond gradings are for guideline purposes only. All stones are graded within their mounts and results are subject to change following the stone(s) being unset. **£300-500**



- 48 A cultured pearl necklace with a sapphire and pearl-set clasp; featuring round akoya pearls of creamy undertone, ranging in size from 6.75 - 6.00 mm, individually knotted to a white metal tongue clasp stamped "750", set with two round-cut blue sapphires measuring 4.0 and 4.5 mm, each surrounded by a halo of pearls, length of necklace 64.0cm (second strand deficient), 38.9 grams. **£100-200**



Fine Jewellery, Watches & Silver, 18th Jun, 2026 09:30

- 49 A diamond solitaire ring, claw-set with a yellow-tinted old European-cut diamond of estimated weight 0.46ct, between chenier shoulders to tapering knife-edge shank, metal marked '18ct & PLAT', size H½, 1.3 grams.
Please note: Unless otherwise stated, all diamond gradings are for guideline purposes only. All stones are graded within their mounts and results are subject to change following the stone(s) being unset. **£200-300**



- 50 An engraved wedding band, of square-edged profile with a repeating floral motif, in white metal stamped "plat", size R, 4.59 grams. **£100-200**



- 51 A Belle Epoque pearl and diamond set bar brooch, with a central pearl surrounded by a circular design leading to a diamond-set foliate design bar brooch, with barrel and pin fittings, bearing French eagle head mark for 18ct to the side of the brooch and pin, length approximately 7.0 cm, weight 4.0 grams, in an unrelated Mappin and Webb cufflink case. **£200-300**



- 52 An Early 20th Century synthetic sapphire and diamond halo ring, centred with an oval-cut synthetic sapphire of 11.0mm x 7.8mm x 5.1mm, within a frame of single-cut diamonds, in a pierced scrollwork gallery, leading to D-profile shank, unmarked white metal testing as 18ct, ring head 1.5cm x 1.3cm, size J, 3.5 grams.
Please note: Unless otherwise stated, all diamond gradings are for guideline purposes only. All stones are graded within their mounts and results are subject to change following the stone(s) being unset. **£400-600**



- 53 A diamond-set full eternity ring, grain-set with round brilliant-cut diamonds, to a white metal mount surface testing as platinum, size O; 3.4 grams
Please note: Unless otherwise stated, lots have been tested using an electronic tester. This is a surface test only and is not a guarantee of metal purity.
Please note: Unless otherwise stated, all diamond gradings are for guideline purposes only. All stones are graded within their mounts and results are subject to change following the stone(s) being unset. **£300-500**



Fine Jewellery, Watches & Silver, 18th Jun, 2026 09:30

- 54 A diamond bar brooch, circa 1915, the central millegrain collet-set old brilliant-cut diamond, weighing approximately 0.40ct, within an openwork lozenge-shaped surround, set throughout with similarly-cut and cushion-shaped diamonds, approximately 1.15cts total, within a millegrain border, mounted in white metal stamped with French assay mark for platinum, length 8cm, gross weight 6.94 grams



Please note: Unless otherwise stated, all diamond gradings are for guideline purposes only. All stones are graded within their mounts and results are subject to change following the stone(s) being unset. **£500-700**

- 55 An old-cut diamond solitaire ring, with an estimated diamond weight of 1.24ct, set in an eight-claw mount between chenier shoulders, plain shank marked 'PLAT', size N, 3.1 grams. Please note: Unless otherwise stated, all diamond gradings are for guideline purposes only. All stones are graded within their mounts and results are subject to change following the stone(s) being unset. **£1,000-1,500**



- 56 An early 20th century cultured pearl and diamond ring, featuring a central cultured pearl measuring approximately 9.21 x 9.05 x 8.9 mm, in a single cut diamond setting, the pearl in a closed button back mount, the ring testing as platinum, ring size M, weight 4.2 grams. Please note: Unless otherwise stated, lots have been tested using an electronic tester. This is a surface test only and is not a guarantee of metal purity. **£700-900**



- 57 A pair of natural and cultured pearl and diamond drop earrings, each set with an old European cut diamond, suspending two baguette cut diamonds, and a smaller old European cut diamond, with a diamond set cap holding a baroque drop shaped pearl, one pearl of a light gray hue with pink lustre (testing as natural saltwater) and the other of cream body colour (testing as beadless, cultured) with post and clip fittings, in unmarked white metal, the posts and fittings surface testing as 18ct, the diamond set drop surface testing as platinum, drops measuring approximately 3.5 (cream pearl drop) and 4.0 cm (gray pearl drop), total weight 10.9 grams.



This item has been subjected to a verbal report from GCS (Ref:5786-30371) confirming 1 x Natural (silver) / 1 x Beadless cultured (cream) - Saltwater pearls.

Please note: Unless otherwise stated, lots have been tested using an electronic tester. This is a surface test only and is not a guarantee of metal purity. **£1,000-1,500**

Fine Jewellery, Watches & Silver, 18th Jun, 2026 09:30

- 58 An Art Deco diamond and natural pearl brooch, of geometric openwork design, encrusted with old-cut diamonds with an estimated total weight of 1.90ct, superimposed with five round pearls, in unmarked white metal testing as platinum, later brooch fittings to verso, 4.1cm wide, 7.0 grams. This item has been subjected to testing by GCS (verbal report no: 5786-3048) which confirms the central pearl as natural, saltwater. The origin of the remaining four pearls is undeterminable due to the setting (15767-1C).



Please note: Unless otherwise stated, all diamond gradings are for guideline purposes only. All stones are graded within their mounts and results are subject to change following the stone(s) being unset. **£1,200-1,800**

- 59 A sapphire and diamond cluster ring, centred with a cushion-cut sapphire of 8.6mm x 7.0mm x 5.1mm, encompassed by twelve round brilliant-cut diamonds with an estimated total weight of 0.75ct, between chenier shoulders to beaded shank, in white metal stamped 'PLAT', ring head 1.4cm x 1.2cm, ring size P (with sizing beads), 4.3 grams. Accompanied by a verbal report by Gemmological Certification Services stating the sapphire is of basaltic deposit origin, with no indications of treatment. (Ref: 5786-2773) Please note: Unless otherwise stated, all diamond gradings are for guideline purposes only. All stones are graded within their mounts and results are subject to change following the stone(s) being unset. **£2,000-2,500**



- 60 A pair of diamond stud earrings, each set with an old European cut diamond, in twelve 'double' claw setting, with post and butterfly fittings, the diamonds weighing approximately 1.75 and 1.77cts, (estimated colour tinted L/M and Si1-2), settings unmarked but surface testing as platinum, weight 3.1 grams. Please note: Unless otherwise stated, lots have been tested using an electronic tester. This is a surface test only and is not a guarantee of metal purity. Please note: Unless otherwise stated, all diamond gradings are for guideline purposes only. All stones are graded within their mounts and results are subject to change following the stone(s) being unset. **£4,000-6,000**



- 61 An Art Deco diamond double clip brooch, set mostly with round old-cut diamonds and some baguette cut diamonds, the larger diamonds bezel set, (total estimated diamond weight 5.00 carats) the diamond brooch on a detachable frame which released two clips, the brooch measures approximately 6.5 cm, unmarked, mostly surface testing as platinum, the frame and clips surface testing as 9ct, total weight 28.2 grams. Please note: Unless otherwise stated, lots have been tested using an electronic tester. This is a surface test only and is not a guarantee of metal purity. Please note: Unless otherwise stated, all diamond gradings are for guideline purposes only. All stones are graded within their mounts and results are subject to change following the stone(s) being unset. **£2,000-3,000**



Fine Jewellery, Watches & Silver, 18th Jun, 2026 09:30

- 62 A diamond single stone ring, set with a transitional-cut round diamond, in a six claw setting, (estimated diamond weight 1.79 carats) with diamond set shoulders, bearing French eagle mark to the outer shank and indescrypt makers mark (an owl with spread wings and initials), surface testing as 18ct, ring size P, weight 3.1 grams.

Please note: Unless otherwise stated, lots have been tested using an electronic tester. This is a surface test only and is not a guarantee of metal purity.

Please note: Unless otherwise stated, all diamond gradings are for guideline purposes only. All stones are graded within their mounts and results are subject to change following the stone(s) being unset. **£1,000-1,500**



- 63 A diamond set plaque brooch, of geometric design, set with old and single cut diamonds, the principle diamond weighing approximately 0.20 carats, the brooch measures approximately 4.5 x 2.0 cm, in unmarked white metal, surface testing as platinum to the front and 18ct to the reverse, with pin and barrel clasp, weight 12.4 grams.

Please note: Unless otherwise stated, lots have been tested using an electronic tester. This is a surface test only and is not a guarantee of metal purity.

Please note: Unless otherwise stated, all diamond gradings are for guideline purposes only. All stones are graded within their mounts and results are subject to change following the stone(s) being unset. **£400-600**



- 64 A fine early 20th century paste set tiara on a silk taffeta headband; set with a large cabochon green paste to centre, measuring approx. 2.5 cm, and a variety of round, oval and marquise-cut pastes of green and white, to white metal prong settings, hand-stitched to a metallic taffetta backing, with an elasticated safety catch to the back; height 5.00cm at centre, tapering to 2.5 cm, 112.0 grams. **£300-500**



- 65 Theodor Fahrner for Murrel Bennet & Co. - An Arts and Crafts pendant necklace, centred with an oval-cut amethyst to a round planished panel with twisted cable border and scrollwork decorations, suspending a keshi pearl drop below, connected to a cable link chain with toggle clasp, white metal stamped '835', and maker's marks for Fahrner and Murrel Bennet & Co., overall length 46.0cm, 7.7 grams. **£200-300**



Fine Jewellery, Watches & Silver, 18th Jun, 2026 09:30

- 66 Murrelle Bennett & Co. - A fancy link bracelet set with blister pearl and peridot, each rectangular openwork link decorated with millgrain details, collet-set with alternating circular-cut peridot and blister pearl, completed with a conforming box clasp, in yellow metal stamped '9ct' and maker's mark, overall length 17.7 cm, 8.2 grams. **£300-500**



- 67 Murrelle Bennett & Co. - A group of three Arts and Crafts brooches; including two brooches set with a turquoise cabochon within entwined wire mounts, one with a turquoise cabochon drop and the other with a cultured pearl, brooch fittings to reverse, and in yellow metal stamped '15ct', width measuring 4.5 cm and 2.7 cm respectively; together with a brooch cum pendant with integral bail, stamped 'Prov. Patent' and '9ct', 2.6 x 2.2 cm; all struck with maker's mark for Murrelle Bennett & Co.; total weight of items 15.8 grams. (3) **£400-600**



- 68 Murrelle Bennett & Co. - an Arts and Crafts enamel link bracelet and brooch of similar design; the bracelet comprising a series of lozenge-shaped links each with a panished panel set with green and cobalt blue enamel, completed with a concealed tongue clasp with push-in thumbpiece, stamped 'silver' with maker's mark, 19.5 cm in length; the brooch of stylised butterfly form, set with green and blue enamel, suspending with a keshi pearl drop below, brooch fittings to verso, in white metal stamped '950' and maker's mark, 3.8 cm wide; total weight of items 27.4 grams. (2) **£250-350**



- 69 A small collection of gem-set Jugendstil jewellery; to include a Theodor Fahrner bracelet, comprising a series of stylised foliate links set with blue enamel, to a box clasp set with an oval chalcedony cabochon within a beaded surround, with personal inscription to the back, signed and marked '935', overall length 17.0 cm; a brooch set with a teardrop-shaped chalcedony cabochon in a surround with stylised wings, suspending a pearl drop below, in white metal marked '900', not signed, possibly Theodor Fahrner, 2.8 cm wide; and a Murrelle Bennett & Co. brooch set with polychromatic enamel and blister pearl centre, 3.5 cm wide; Total weight of items 37.8 grams. (3) **£300-500**



Fine Jewellery, Watches & Silver, 18th Jun, 2026 09:30

- 70 Theodor Fahrner - A synthetic sapphire and marcasite dress ring together with a pair of conforming earrings; The ring featuring a square-cut synthetic blue sapphire measuring approximately 9.8mm x 9.4mm x 5.15mm, encircled by a border of grain-set marcasite, to shoulders each featuring four rows grain-set with marcasite, to a white metal ring shank marked 'sterling', signed 'TF' for Theodor Fahrner, ring size O 1/2, 6.7 grams; The earrings of conforming design, each featuring a square-cut light blue topaz, measuring approximately 9.4mm x 9.4mm x 5.6mm, also encircled by a border grain-set with marcasite, to hinged clip backs, in white metal marked 'sterling', signed 'TF' for Theodor Fahrner, 6.8 grams. (2). **£150-250**



- 71 Theodor Fahrner - An enamel and gem-set brooch, centrally-set with an oval mixed-cut citrine, within a marcasite-set floral and foliate-style surround, with black enamel fan-shaped terminals, each with bezel-set blister pearls, in white metal stamped with maker's marks 'TF' and '935' for silver; 8.7 grams. **£80-120**



- 72 Theodor Fahrner - Three brooches; the first in the style of two leaves, decorated with a cabochon carnelian, stamped 'Original Fahrner 925', the second bearing the same marks in an abstract form with clip to the back, the third in the form of a gilt rose, stamped 'TF 925' to the reverse, total weight 42.7 grams (3). **£100-200**



- 73 A gem-set Scottish Terrier brooch, the stylised head constructed with wires, ruby cabochons as eyes and an onyx nose, brooch fittings to the reverse, unmarked yellow metal testing as 18ct, 2.3cm x 2.5cm, 6.5 grams.
Please note: Unless otherwise stated, lots have been tested using an electronic tester. This is a surface test only and is not a guarantee of metal purity. **£300-500**



- 74 A Mid-Century diamond brooch and earring set, circa 1950/60, both of foliate design, decorated with round brilliant-cut diamonds to the centre and edges, the brooch with pin and catch fitting, measuring approximately 3.5cm x 4.5cm, the earrings with post and clip fittings, measuring approximately 2.0cm, unmarked, the brooch surface testing as 18ct, the earrings surface testing as 14ct, total weight 28.0 grams.
Please note: Unless otherwise stated, lots have been tested using an electronic tester. This is a surface test only and is not a guarantee of metal purity. **£800-1,200**



Fine Jewellery, Watches & Silver, 18th Jun, 2026 09:30

- 75 An emerald and diamond ring, circa 1940s, featuring a central emerald measuring 10.29mm x 7.55mm x 5.32mm with an estimated carat weight of 3.34 carats, with round brilliant-cut diamonds to the shoulders, unmarked, testing as 18ct yellow gold, ring size S, weight 7.5 grams.
Please note: Unless otherwise stated, lots have been tested using an electronic tester. This is a surface test only and is not a guarantee of metal purity. **£1,500-2,500**



- 76 A tigers eye signet ring, inset with an oval tigers eye tablet, to a 9ct yellow gold mount, size V, together with a pair of tigers eye cufflinks, each cufflink with two tigers eye cabochons, in 9ct gold mounts, with chain connectors; 15.1 grams. **£300-500**



- 77 A modernist diamond solitaire ring, featuring a central claw-set round brilliant-cut diamond of estimated 0.22ct, the claw-setting to a concave lozenge-shaped panel of modernist design, to an 18ct gold ring shank, ring size L, Birmingham 1963, 3.9 grams.
Please note: Unless otherwise stated, all diamond gradings are for guideline purposes only. All stones are graded within their mounts and results are subject to change following the stone(s) being unset. **£250-350**



- 78 A diamond set bar brooch, of modernist design, set with old-cut and baguette-cut diamonds, in a spray design, the brooch measures approximately 5.0cm x 1.0cm, unmarked, testing as 18ct, weight 5.6 grams.
Please note: Unless otherwise stated, lots have been tested using an electronic tester. This is a surface test only and is not a guarantee of metal purity. **£250-350**



Fine Jewellery, Watches & Silver, 18th Jun, 2026 09:30

- 79 An abstract diamond-set ring, featuring three claw-set graduating principal diamonds, with two additional claw-set diamond accents, the largest round brilliant-cut diamond of estimated 0.36ct, flanked by two round brilliant-cut diamonds estimated as 0.16ct each, the shoulders of abstract design with openwork detail, to a yellow metal ring shank surface testing as 14ct, ring size I 1/2, 6.5 grams.

Please note: Unless otherwise stated, lots have been tested using an electronic tester. This is a surface test only and is not a guarantee of metal purity.

Please note: Unless otherwise stated, all diamond gradings are for guideline purposes only. All stones are graded within their mounts and results are subject to change following the stone(s) being unset. **£350-450**



- 80 An 18ct diamond leaf brooch, the leaf with a textured satin finish, decorated with a diamond stem and diamond bow, marked '750' with makers mark 'RHB', the brooch measures approximately 6.0cm long, weight 6.4 grams.

Please note: Unless otherwise stated, all diamond gradings are for guideline purposes only. All stones are graded within their mounts and results are subject to change following the stone(s) being unset. **£400-600**



- 81 An abstract diamond and synthetic ruby ring, featuring a central claw-set round-cut synthetic ruby, the synthetic ruby encircled by a cluster of beaded rods and highlighted by four round brilliant-cut diamonds claw-set at cardinal points, the shoulders of organic design, to a yellow metal ring shank stamped '14K', ring size J 1/2, 5.9 grams.

Please note: Unless otherwise stated, all diamond gradings are for guideline purposes only. All stones are graded within their mounts and results are subject to change following the stone(s) being unset. **£300-400**



- 82 A diamond set scarf clip and a diamond stud; the hinged scarf clip of ribbon-like form, set with round brilliant-cut diamonds ranging from 1.5mm - 2.00mm, in unmarked yellow metal, with a safety clasp to reverse; surface testing as 14ct, measuring 3.00cm x 2.5cm, 6.0 grams; together with a single diamond-set cluster stud, featuring a central round brilliant-cut diamond of 3.5mm, surrounded by a halo of single cut diamonds of 1.5mm each, to a white metal prong setting testing as 14ct and post testing as base, with (unassociated?) dress stud fitting in white base metal.

Please note: Unless otherwise stated, lots have been tested using an electronic tester. This is a surface test only and is not a guarantee of metal purity. **£300-500**



Fine Jewellery, Watches & Silver, 18th Jun, 2026 09:30

- 83 A diamond-set dress ring, featuring a band of crossover design, with crosshatch texture, highlighted by a double row of claw-set round brilliant-cut diamonds, the band in yellow metal stamped '14K', ring size G, 5.2 grams.
Please note: Unless otherwise stated, all diamond gradings are for guideline purposes only. All stones are graded within their mounts and results are subject to change following the stone(s) being unset. **£300-500**



- 84 A 9ct pearl brooch, of foliate design, decorated with seed pearls, the brooch measuring approximately 7.0cm in length, bearing UK hallmarks for Birmingham 1964, weight 7.1 grams. **£200-300**



- 85 A pair of cultured pearl and diamond cluster stud earrings, each centred with a round cultured pearl of 6.9mm, in a scalloped surround collet-set with a frame of diamonds, peg and butterfly fittings, in yellow metal testing as 18ct, butterfly backs stamped '585', 3.9 grams.
Please note: Unless otherwise stated, all diamond gradings are for guideline purposes only. All stones are graded within their mounts and results are subject to change following the stone(s) being unset. **£200-300**



- 86 Mikimoto - A necklace and earrings; the necklace comprising graduated cultured pearls, strung knotted, with a pearl set clasp, bearing the Mikimoto signature and stamped 'WG K10', necklace length approximately 44.0cm, weight 23.1 grams, with a pair of screw back earrings, each with one cultured pearl, with Mikimoto signature and stamped '14K', weight 2.7 grams, also with Mikimoto booklet dated December 1963, a purchase receipt possibly related from 1964 and valuation from 1965. **£300-500**



- 87 A small group of cultured pearl jewellery, to include; a cultured pearl brooch of fruiting vine design, with a graduating row of cultured pearls, the brooch measuring 4.5cm x 3.2cm, in yellow metal with crosshatch texture, to pin and locking C clasp fitting, the reverse stamped '14K', 7.6 grams; a pair of ear clips of conforming fruiting vine design, each featuring ten round cultured pearls, in yellow metal with crosshatch texture, the clip fittings stamped '14K', 6.1 grams; a cultured pearl dress ring, featuring a round 6.9mm cultured pearl extending from a stylised branch with three leaf forms, detailed with crosshatch texture, in yellow metal stamped '14K', ring size I 1/2, 2.5 grams. (3). **£350-450**



Fine Jewellery, Watches & Silver, 18th Jun, 2026 09:30

- 88 A sapphire and diamond halo ring, centred with an oval-cut sapphire of pale greyish-blue colour, approximately measuring 10.0mm x 7.7mm x 3.4mm, encircled with fourteen round brilliant-cut diamonds with an estimated total weight of 0.55ct, between floral shoulders, in yellow metal marked '14K', ring head 1.8cm x 1.5cm, size N, 4.2 grams.

Please note: Unless otherwise stated, all diamond gradings are for guideline purposes only. All stones are graded within their mounts and results are subject to change following the stone(s) being unset. **£800-1,200**



- 89 A diamond-set sweetheart brooch, with central fused grenade set with rose-cut diamonds, in a floral and foliate surround, accented with diamonds and pink paste, in a gilt metal mount, brooch fitting to the reverse (pin fitting surface tested as 14ct); 17.5 grams

Please note: Unless otherwise stated, lots have been tested using an electronic tester. This is a surface test only and is not a guarantee of metal purity.

Please note: Unless otherwise stated, all diamond gradings are for guideline purposes only. All stones are graded within their mounts and results are subject to change following the stone(s) being unset. **£400-600**



- 90 A ruby and diamond-set ring, featuring three oval-shaped rubies of deep purplish-red colour, each interspersed by a panel illusion-set with two single-cut diamonds, to a yellow metal ring shank surface testing as 18ct, ring size S, 3.8 grams.

Please note: Unless otherwise stated, lots have been tested using an electronic tester. This is a surface test only and is not a guarantee of metal purity. **£300-500**



- 91 A jambiya dagger brooch, in a sheath decorated with twisted cables and scrollwork engravings, opening to reveal blade, fixed with safety chain, brooch fittings to the back, unmarked yellow metal surface testing as 18ct, 5.5 cm, 10.0 grams.

Please note: Unless otherwise stated, lots have been tested using an electronic tester. This is a surface test only and is not a guarantee of metal purity. **£300-500**



- 92 A ruby and diamond panel ring, featuring a central claw-set round-cut ruby of reddish-pink colour, enclosed within a white metal square panel grain-set with round brilliant-cut diamonds, to bifurcated shoulders each grain-set with three round brilliant-cut diamonds and detailed with millegrained borders, to an 18ct yellow gold ring shank, ring size P 1/2, 4.2 grams. Please note: Unless otherwise stated, all diamond gradings are for guideline purposes only. All stones are graded within their mounts and results are subject to change following the stone(s) being unset. **£250-350**



Fine Jewellery, Watches & Silver, 18th Jun, 2026 09:30

- 93 A curb-link bracelet, completed with heart-padlock clasp, comprising a series of hollow-curb links in yellow metal surface testing as 9ct, the padlock stamped '9ct', inner circumference approximately 17.0cm, 16.7 grams.
Please note: Unless otherwise stated, lots have been tested using an electronic tester. This is a surface test only and is not a guarantee of metal purity. **£400-600**



- 94 A pair of opal and diamond floral earrings, the flowerhead composed of five opal cabochons of oval shape, centred with a diamond accent, screw-on fittings to the reverse, yellow metal stamped '18ct', 1.5cm wide, in a fitted case for Tessier Ltd New Bond Street, 5.0 grams.
Please note: Unless otherwise stated, all diamond gradings are for guideline purposes only. All stones are graded within their mounts and results are subject to change following the stone(s) being unset. **£200-300**



- 95 An opal pendant on chain, featuring an oval cabochon of a precious opal, displaying play-of-colour mainly ranging from yellow to blue, measuring 11.6mm x 8.8mm x 3.5mm, collet-set below a stylised bail in yellow metal stamped '750', 2.5 cm drop; on a 45.0 cm long foxtail chain in 9ct gold, British convention marks, 5.7 grams. **£400-600**



- 96 An amethyst line bracelet, featuring ten oval faceted amethysts, in a claw setting, within an ornate beaded mount/setting, in 9ct yellow gold, hallmarked London 2005, length approximately 18.5 cm, weight 17.0 grams. **£800-1,200**



- 97 An amethyst dress ring, comprising a mixed-cut oval amethyst of 15.4mm x 12.6mm, in a claw-setting between bifurcated wire shoulders, in yellow metal testing as 18ct, size L½, 3.8 grams.
Please note: Unless otherwise stated, lots have been tested using an electronic tester. This is a surface test only and is not a guarantee of metal purity. **£120-160**



Fine Jewellery, Watches & Silver, 18th Jun, 2026 09:30

- 98 An amethyst pendant, collet-set with a pear-cut amethyst of 15.6mm x 11.4mm x 7.8mm, in a conforming stepped surround, to a hinged clip bail, in yellow metal marked '585', drop length 3.2 cm, 5.4 grams. **£100-150**
- 99 A curb link bracelet, each link stamped '375', completed with a 9ct gold padlock clasp, and additional safety chain, bracelet length approximately 17.0cm, 44.4 grams. **£400-600**
- 100 An amethyst and diamond dress ring, set with a multi faceted rectangular amethyst, in a four claw setting, with two rows of channel-set round brilliant-cut diamonds to the shoulders, bearing UK hallmarks for 18ct gold, ring size R, weight 8.1 grams.
Please note: Unless otherwise stated, all diamond gradings are for guideline purposes only. All stones are graded within their mounts and results are subject to change following the stone(s) being unset. **£300-500**
- 101 A citrine dress ring, featuring an oval-shaped citrine, measuring 21.1mm x 16.2mm x 9.0mm, claw-set to a yellow metal rins shank surface testing as 9ct, ring size K 1/2, 7.9 grams.
Please note: Unless otherwise stated, lots have been tested using an electronic tester. This is a surface test only and is not a guarantee of metal purity. **£200-300**
- 102 A charm necklace, consisting of a fancy link chain of segments of cable links flanking reeded bars, in pinkish yellow metal stamped '9c', suspending seven charms, to include a carved jade elephant, a carved jade monkey, a 9ct gold articulated Tower Bridge, a Viking longship testing as 14ct, and other roll gold and gilt items; overall length 40.0 cm, 18.5 grams.
Please note: Unless otherwise stated, lots have been tested using an electronic tester. This is a surface test only and is not a guarantee of metal purity. **£300-500**



Fine Jewellery, Watches & Silver, 18th Jun, 2026 09:30

- 103 An Art Deco carved jade dress clip, the rectangular jadeite plaque of mottled bright green colour carved as a recumbent hornless dragon amongst clouds, claw-set to a clip fittings in yellow metal, struck with French eagle head assay mark for 18ct, and indistinct maker's mark 'CB', 3.8 x 3.4 cm, 31.2 grams. **£300-500**



- 104 A Chinese jade heart pendant on chain, the cable-link chain completed with a hook clasp and suspending a jade pendant of heart form, the pendant with decorative metalwork surmount, yellow metal testing as high carat, chain length approximately 36.5cm, weight 22.4 grams.
Please note: Unless otherwise stated, lots have been tested using an electronic tester. This is a surface test only and is not a guarantee of metal purity. **£700-900**



- 105 A jade and pearl brooch and earring set, both of foliate design, the brooch and earrings each comprising a marquise-shaped piece of pale green jade, further decorated with cultured pearls, creating a vine motif, the brooch with pin and hook fitting, the earrings with clip on fitting, both stamped '14k', total weight 21.1 grams. **£400-600**



- 106 A cultured baroque pearl and diamond pendant on chain, the golden South Sea baroque pearl of 12.5mm x 11.5mm, set below a surmount claw-set with a round brilliant-cut diamond of 0.25ct, and a bifurcated wire bail, in unmarked yellow metal testing as 18ct, 3.0 cm drop length, on a 46.0cm long wheat link chain in 18ct yellow gold, British import marks, 5.1 grams.
Please note: Unless otherwise stated, all diamond gradings are for guideline purposes only. All stones are graded within their mounts and results are subject to change following the stone(s) being unset. **£200-300**



- 107 A golden South Sea cultured pearl necklace, comprising a single row of individually knotted golden South Sea cultured pearls, measuring between 9.0mm - 9.9mm, to a white base metal clasp, the necklace measuring approximately 45.5cm in length, accompanied by a Gemporia certificate of authenticity which states the pearls originate from the Philippines and are not enhanced, also accompanied by an information booklet on pearls by Charlie Barron, in a Gemporia pouch, 57.1 grams. **£500-700**



Fine Jewellery, Watches & Silver, 18th Jun, 2026 09:30

- 108 A braided necklace in 9ct yellow gold, comprising three rows of mesh link chains, completed with a lobster clasp, Italian assay marks and British import marks, overall length 43.5cm, 29.6 grams. **£900-1,100**



- 109 A diamond set bracelet, of panel design, each panel set with a Greek Key design of round diamonds, claw set, with tongue and clip clasp and two figure of eight safety catches, stamped '9CT', bracelet length approximately 20.0cm, weight 30.0 grams.

Please note: Unless otherwise stated, all diamond gradings are for guideline purposes only. All stones are graded within their mounts and results are subject to change following the stone(s) being unset. **£600-800**



- 110 A diamond half-eternity ring, featuring five claw-set round brilliant-cut diamonds, with an estimated total carat weight of 0.70ct, to a yellow metal ring shank marked '585', ring size K, 4.4 grams.

Please note: Unless otherwise stated, all diamond gradings are for guideline purposes only. All stones are graded within their mounts and results are subject to change following the stone(s) being unset. **£300-500**



- 111 A diamond set dress ring, of geometric design, the centre grain-set with nine round-cut diamonds in a square shape, with a further four round-cut diamonds to each side, stamped '14K', ring size S 1/2, weight 7.0 grams.

Please note: Unless otherwise stated, all diamond gradings are for guideline purposes only. All stones are graded within their mounts and results are subject to change following the stone(s) being unset. **£400-600**



- 112 A diamond seven stone half eternity ring, featuring seven round brilliant-cut diamonds, estimated total diamond weight 1.75 carats, claw-set in 18ct white gold and extending to an 18ct yellow gold ring shank, ring size L 1/2, weight 3.7 grams.

Please note: Unless otherwise stated, all diamond gradings are for guideline purposes only. All stones are graded within their mounts and results are subject to change following the stone(s) being unset. **£700-1,000**

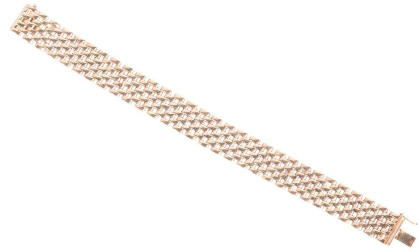


Fine Jewellery, Watches & Silver, 18th Jun, 2026 09:30

- 113 A diamond solitaire ring, featuring a central claw-set round brilliant-cut diamond of estimated 0.89ct, to a yellow metal ring shank surface testing as 18ct, ring size L, 2.25 grams.
Please note: Unless otherwise stated, lots have been tested using an electronic tester. This is a surface test only and is not a guarantee of metal purity.
Please note: Unless otherwise stated, all diamond gradings are for guideline purposes only. All stones are graded within their mounts and results are subject to change following the stone(s) being unset. **£800-1,200**



- 114 A flat panther-link bracelet, comprising seven rows of panther links, and a concealed tongue clasp with push-in thumbpiece, in yellow metal stamped '14K', overall length 19.5cm, width 1.5cm, 21.7 grams. **£800-1,200**



- 115 A diamond-set panel ring, featuring a panel of twelve grain-set round brilliant-cut diamonds, to yellow metal shoulders detailed with hammered texture, to a yellow metal ring shank surface testing as 18ct, ring size U, 9.4 grams.
Please note: Unless otherwise stated, lots have been tested using an electronic tester. This is a surface test only and is not a guarantee of metal purity. **£500-700**



- 116 A diamond-set dress ring, the band formed with a central twisted motif, set with six round brilliant-cut diamond accents, to tapering shank stamped '14K', ring size K, 3.7 grams.
Please note: Unless otherwise stated, all diamond gradings are for guideline purposes only. All stones are graded within their mounts and results are subject to change following the stone(s) being unset. **£200-300**



- 117 A pair of diamond set half hoop earrings, set with a principal round brilliant-cut diamond in a half bezel setting estimated total weight of round brilliant-cuts 0.45 carats, each earring set with six baguette-cut diamonds to the underneath, bar-set, with post and butterfly fittings, length approximately 1.3cm, stamped 18ct, weight 4.8 grams.
Please note: Unless otherwise stated, all diamond gradings are for guideline purposes only. All stones are graded within their mounts and results are subject to change following the stone(s) being unset. **£400-600**



Fine Jewellery, Watches & Silver, 18th Jun, 2026 09:30

- 118 A diamond-set half-eternity ring, featuring a central claw-set round brilliant-cut diamond of estimated 0.24ct, flanked each side by a channel of five graduating baguette-cut diamonds, to a yellow metal ring shank marked 'K18', ring size P, 3.9 grams. Please note: Unless otherwise stated, all diamond gradings are for guideline purposes only. All stones are graded within their mounts and results are subject to change following the stone(s) being unset. **£400-600**



- 119 A diamond-set pendant on chain, comprising two graduated round brilliant-cut diamonds in a conforming surround, with an estimated total weight of 0.80ct, in unmarked metal testing as 14ct and 18ct, 1.7 cm drop, attached to a later curb link chain of 44.0 cm, stamped '9K', 5.4 grams. Please note: Unless otherwise stated, all diamond gradings are for guideline purposes only. All stones are graded within their mounts and results are subject to change following the stone(s) being unset. **£400-600**



- 120 A yellow diamond floral cluster ring, with a central round brilliant-cut yellow diamond, surrounded by eight round brilliant-cut white diamonds, all claw-set, with UK hallmarks for 18ct gold, ring size N, weight 2.2 grams. Please note: Unless otherwise stated, all diamond gradings are for guideline purposes only. All stones are graded within their mounts and results are subject to change following the stone(s) being unset. **£300-500**



- 121 A fancy link bracelet, comprising a series of hollow hinged links, alternating with cross and lozenge motifs, completed with a concealed tongue clasp and safety catch, in yellow metal stamped '14K', overall length 19.0 cm, 8.1 grams. **£300-500**



- 122 A multi-gem dress ring, flush-set with round and navette-cut emeralds, sapphires and rubies, to a tapering wide band in yellow metal surface testing as 14ct, size N, 5.2 grams. Please note: Unless otherwise stated, lots have been tested using an electronic tester. This is a surface test only and is not a guarantee of metal purity. **£300-500**



Fine Jewellery, Watches & Silver, 18th Jun, 2026 09:30

- 123 A pair of gem-set hoop earrings in 18ct yellow gold, the tapered hoops each collet-set with an oval-cut ruby flanked by two flush-set diamond accents, with ear post and a hinged back, London import marks 1982, 1.5 cm drop, 6.2 grams. Please note: Unless otherwise stated, all diamond gradings are for guideline purposes only. All stones are graded within their mounts and results are subject to change following the stone(s) being unset. **£400-600**



- 124 A sapphire cabochon dress ring, comprising a pointed oval sapphire cabochon of 8.6 x 6.3 x 4.0 mm, set to a ribbed mount to tapering shank, in yellow metal marked '18K', size P, 10.0 grams. **£800-1,200**



- 125 A pair of sapphire and diamond stud earrings in 18ct gold, each collet-set with an oval-cut sapphire below a collet-set round brilliant-cut diamond, fitted with peg and butterflies to the back, British import marks, 1.2 cm drop length, 3.2 grams. Please note: Unless otherwise stated, all diamond gradings are for guideline purposes only. All stones are graded within their mounts and results are subject to change following the stone(s) being unset. **£200-300**



- 126 A multi-gem triple cluster ring, collet-set with an oval cabochon of sapphire, ruby and an emerald, within a border of small round-cut diamonds, in unmarked yellow metal testing as 18ct, size N, 8.2 grams. Please note: Unless otherwise stated, lots have been tested using an electronic tester. This is a surface test only and is not a guarantee of metal purity. **£1,000-2,000**



- 127 A multi-gem half hoop ring, set with an oval-cut emerald, ruby, and a greenish-blue sapphire, each stone approximately measures 8.0mm x 6.0mm, interspersed with four round brilliant-cut diamond accents, shank unmarked testing as 14ct, size N½, 5.0 grams. Please note: Unless otherwise stated, lots have been tested using an electronic tester. This is a surface test only and is not a guarantee of metal purity. **£1,000-2,000**



Fine Jewellery, Watches & Silver, 18th Jun, 2026 09:30

- 128 A gem-set long necklace and matching bracelet, each set with cabochon emeralds, rubies, blue sapphires and round brilliant-cut diamonds, in a rub-over setting with rope edge detailing, necklace length approximately 74.0cm, bracelet length 21.0cm, both the necklace and bracelet unmarked, testing as 18ct, the bracelet with a later added 9ct clasp, total weight 104.5 grams.

Please note: Unless otherwise stated, lots have been tested using an electronic tester. This is a surface test only and is not a guarantee of metal purity. **£5,000-7,000**



- 129 An emerald, ruby and diamond ring, featuring a principle heart shaped emerald, in a rub over setting, surrounded by round and tapered baguette-cut diamonds, and tapered baguette rubies, in claw and chanel settings, the ring measures approximately W23.0mm x H14.2mm x D7.3mm, ring size P, weight 12.5 grams.

Please note: Unless otherwise stated, all diamond gradings are for guideline purposes only. All stones are graded within their mounts and results are subject to change following the stone(s) being unset. **£3,000-5,000**



- 130 An emerald and diamond-set bracelet, composed of oval mixed-cut emeralds, surrounded by round brilliant-cut diamonds, in a yellow metal mount surface tested as 18ct, measuring approximately 18.5cm; 18.5 grams

Please note: Unless otherwise stated, lots have been tested using an electronic tester. This is a surface test only and is not a guarantee of metal purity. **£1,200-1,800**



- 131 An emerald and diamond cluster pendant on chain, the pendant with integral bail comprising a square step-cut emerald of 6.6 x 6.5 x 4.5 mm, set below a trillion-cut diamond in a diamond surround, with an estimated total weight of 0.70ct, 1.6 cm drop, on a 38.0 cm long fine curb link chain with spring-ring clasp, yellow metal surface testing as 14ct, 3.2 grams.

Please note: Unless otherwise stated, lots have been tested using an electronic tester. This is a surface test only and is not a guarantee of metal purity. **£600-800**



- 132 An emerald and diamond dress ring in 18ct gold, centred with an oval-cut emerald of 6.9mm x 4.9mm, shoulders set with three round brilliant-cut diamonds on each side, leading to a D-profile shank, British hallmarks, size J, 2.6 grams.

Please note: Unless otherwise stated, all diamond gradings are for guideline purposes only. All stones are graded within their mounts and results are subject to change following the stone(s) being unset. **£200-300**



Fine Jewellery, Watches & Silver, 18th Jun, 2026 09:30

- 133 An emerald and diamond dress ring, featuring a central claw-set emerald-cut emerald, flanked by shoulders collet-set with six round brilliant-cut diamonds, to a yellow metal ring shank surface testing as 18ct, ring size K, 4.5 grams.
Please note: Unless otherwise stated, lots have been tested using an electronic tester. This is a surface test only and is not a guarantee of metal purity. **£300-500**



- 134 An emerald and diamond trilogy ring, featuring a central claw-set emerald-cut emerald of yellowish-green colour, measuring 4.5mm x 3.4mm x 2.65mm, flanked each side by a claw-set round brilliant-cut diamond, to a yellow metal ring shank surface testing as 18ct, ring size P, 2.4 grams.
Please note: Unless otherwise stated, lots have been tested using an electronic tester. This is a surface test only and is not a guarantee of metal purity. **£200-300**



- 135 An emerald and diamond hinged bangle, featuring seven round brilliant-cut diamonds interspersed by round-cut emeralds, each stone set in a collet of scrolled design, to a yellow metal hinged bangle completed with an integral push clasp with additional safety catch, yellow metal surface testing as 14ct, inner circumference approximately 15.5cm, 6.4 grams.
Please note: Unless otherwise stated, lots have been tested using an electronic tester. This is a surface test only and is not a guarantee of metal purity. **£250-650**



- 136 An emerald and diamond ring, set with three round emeralds, each surrounded by round brilliant-cut diamonds, all claw set, mounted in 18ct gold, ring size T, weight 3.5 grams.
Please note: Unless otherwise stated, all diamond gradings are for guideline purposes only. All stones are graded within their mounts and results are subject to change following the stone(s) being unset. **£250-350**



- 137 An emerald-set ring, composed of a step-cut emerald, in a four claw setting to bifurcated shoulders, leading to a yellow metal shank marked '14K', size N; 3.6 grams **£300-500**



Fine Jewellery, Watches & Silver, 18th Jun, 2026 09:30

- 138 A diamond and synthetic moissanite dress ring, featuring a central panel grain-set with round-cut synthetic moissanite, to a yellow metal ring shank surface testing as 9ct, ring size S 1/2, 3.1 grams.
Please note: Unless otherwise stated, lots have been tested using an electronic tester. This is a surface test only and is not a guarantee of metal purity. **£200-300**



- 139 An emerald and diamond cluster ring, featuring a central round brilliant-cut diamond of estimated 0.17ct, with six additional single-cut diamond highlights, the central diamond cluster flanked each side by three marquise-shaped emeralds, to a yellow metal ring shank surface testing as 14ct, ring size I 1/2, 3.5 grams.
Please note: Unless otherwise stated, lots have been tested using an electronic tester. This is a surface test only and is not a guarantee of metal purity. **£180-220**



- 140 A pair of sapphire and diamond drop earrings, each of stylised foliate form, claw-set with an oval-cut sapphire with diamond accents to the surround, hook fittings, yellow metal stamped '750', overall length 3.2 cm, 3.5 grams.
Please note: Unless otherwise stated, all diamond gradings are for guideline purposes only. All stones are graded within their mounts and results are subject to change following the stone(s) being unset. **£200-300**



- 141 A diamond-set cluster ring, featuring an abstract cluster of thirteen claw-set round brilliant-cut diamonds, the settings staggered at varying heights, with an estimated total diamond carat weight of 0.65ct, flanked by shoulders of crossover design, to a yellow metal ring shank marked '14K', ring size J 1/2, 4.1 grams.
Please note: Unless otherwise stated, all diamond gradings are for guideline purposes only. All stones are graded within their mounts and results are subject to change following the stone(s) being unset. **£180-220**



- 142 A sapphire and diamond cluster ring, featuring three baguette-shaped dark blue sapphires, encircled by a row of claw-set brilliant-cut diamonds, to an 18ct yellow gold ring shank, ring size O, 4.1 grams. **£250-350**



Fine Jewellery, Watches & Silver, 18th Jun, 2026 09:30

- 143 A sapphire and diamond cluster ring, featuring a central calw-set oval-shaped dark blue sapphire encircled by a cluster of twenty claw-set round brilliant-cut diamonds, to a yellow metal ring shank marked '14K', ring size K 1/2, 5.0 grams. **£300-400**



- 144 A synthetic spinel dress ring, set with a rectangular step-cut synthetic spinel of 10.5mm x 8.3mm x 5.0mm, to a tapering flat shank, yellow metal stamped with Swedish assay marks for 18ct, 1962, and maker's mark for Olenfalk & Hellbergs, size J½, 5.2 grams. **£200-300**



- 145 A clover bracelet, the motif is composed of multicoloured heart-cut cubic zirconia, and a circular-cut colourless cubic zirconia highlight to the centre, to two curved wire halves, fastened by a spring-ring clasp, in yellow metal struck with Italian assay marks for 18ct, inner diameter 6.0cm, 4.0 grams. **£200-300**



- 146 A tanzanite and diamond dress ring, centred with a step-cut tanzanite of 6.9mm x 4.2mm, with shoulders channel-set with six rows of graduated round brilliant-cut diamonds, with an estimated total weight of 0.88ct, to a flat tapering shank, yellow metal stamped '14K', size R, 7.3 grams. **£300-500**



- 147 An ID bracelet in tri-colour 18ct gold, comprising a series of belcher links, with a vacant panel and altering spacers in the form of teddy bears and swollen stars, completed with a lobster clasp, British hallmarks, overall length 16.0 cm, 6.3 grams. **£400-600**



Fine Jewellery, Watches & Silver, 18th Jun, 2026 09:30

- 148 A tapering tubogas necklace, completed with a tongue clasp with push-in thumbpiece, yellow metal struck with Italian assay marks for 18ct, maker's registration mark for Campi Lino, overall length 38.0 cm, 21.7 grams. **£1,200-1,800**



- 149 A diamond solitaire ring, featuring a central round brilliant-cut diamond of estimated 0.94ct, in a high-profile six-claw setting, to a yellow metal ring shank marked '585', ring size M, 11.1 grams.
Please note: Unless otherwise stated, all diamond gradings are for guideline purposes only. All stones are graded within their mounts and results are subject to change following the stone(s) being unset. **£1,000-1,500**



- 150 A 14ct white and green diamond ring, set with alternating rows of round-cut green and white diamonds, claw-set, in a concaved design, with worn British hallmarks stamped '585', ring size S, weight 6.5 grams. **£600-800**



- 151 A three-stone diamond pendant, claw-set with three round brilliant-cut diamonds of graduated sizes, with an estimated total diamond carat weight of 0.50ct, in a 9ct white gold mount, to a 9ct gold flat curb link chain, measuring approximately 46.0cm; 3.6 grams
Please note: Unless otherwise stated, all diamond gradings are for guideline purposes only. All stones are graded within their mounts and results are subject to change following the stone(s) being unset. **£260-280**



- 152 A diamond solitaire ring, featuring a central claw-set round brilliant-cut diamond of estimated 0.38ct, with a stated total diamond carat weight of 0.90ct, the gallery grain-set with further round brilliant-cut diamonds, to diamond-set shoulders and a white metal ring shank marked '585', ring size N, 3.3 grams.
Please note: Unless otherwise stated, all diamond gradings are for guideline purposes only. All stones are graded within their mounts and results are subject to change following the stone(s) being unset. **£300-500**



Fine Jewellery, Watches & Silver, 18th Jun, 2026 09:30

- 153 A diamond half-eternity ring, featuring eighteen round brilliant-cut diamonds, to a platinum ring shank, ring size M, 2.7 grams. Please note: Unless otherwise stated, all diamond gradings are for guideline purposes only. All stones are graded within their mounts and results are subject to change following the stone(s) being unset. **£300-500**



- 154 A diamond-set three-stone ring, composed of three round brilliant diamonds, with an estimated total carat weight of 0.80ct, in a platinum mount, size M; 4.5 grams. Please note: Unless otherwise stated, all diamond gradings are for guideline purposes only. All stones are graded within their mounts and results are subject to change following the stone(s) being unset. **£400-600**



- 155 A sapphire pendant and diamond stud earrings, the sapphire pendant featuring a round blue sapphire (estimated weight 0.86 carats) in a four claw setting, on a fine curb chain, both the chain and the pendant hallmarked 9ct, '375', chain length approximately 52.0cm, with a pair of diamond stud earrings, featuring round brilliant-cut diamonds (estimated total diamond weight 0.40 carats) in a four claw mount, with post and butterfly fittings, hallmarked 9ct, total weight 2.8 grams, in an Ernest Jones box. Please note: Unless otherwise stated, all diamond gradings are for guideline purposes only. All stones are graded within their mounts and results are subject to change following the stone(s) being unset. **£300-500**



- 156 A laboratory-grown diamond ring, featuring a laboratory-grown radiant-cut diamond, estimated total weight 2.66 carats, in a claw setting, with laboratory-grown diamond-set shoulders, the mount hallmarked 18ct gold, ring size L 1/2, weight 5.6 grams. Please note: Unless otherwise stated, all diamond gradings are for guideline purposes only. All stones are graded within their mounts and results are subject to change following the stone(s) being unset. **£300-500**

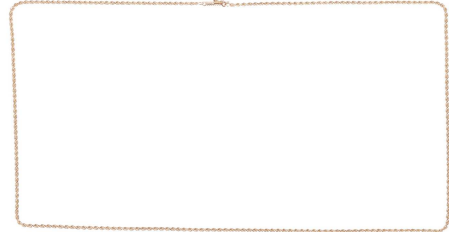


- 157 A sapphire and diamond set ring, featuring a central round cut sapphire of pale blue colour, measuring approximately 4.5 mm, flanked to either side by old cut diamonds of approximately 3.0mm, in white metal prong settings, to a bifurcated band of yellow metal stamped 18ct, size V, 2.4 grams. **£200-300**



Fine Jewellery, Watches & Silver, 18th Jun, 2026 09:30

- 158 A twisted rope link necklace, completed with a tube clasp with spiral details, in yellow metal stamped 'MA 14K', overall length 60.0 cm, 6.8 grams. **£250-350**



- 159 An aquamarine and diamond cluster ring, centred with an oval-cut aquamarine of 7.4 x 5.7 x 3.65 mm, encircled by a frame of single-cut diamonds, between tapered chenier shoulders leading to a D-profile shank, yellow metal stamped '18K', ring head 1.0 x 0.95 cm, size M, 2.5 grams.

Please note: Unless otherwise stated, all diamond gradings are for guideline purposes only. All stones are graded within their mounts and results are subject to change following the stone(s) being unset. **£400-600**



- 160 A pair of diamond drop earrings, each comprising two round brilliant-cut diamonds, claw-set, total estimated diamond weight 0.95 carats, with post and butterfly fittings, hallmarked to the post 18ct gold, total weight 2.1 grams.

Please note: Unless otherwise stated, all diamond gradings are for guideline purposes only. All stones are graded within their mounts and results are subject to change following the stone(s) being unset. **£300-500**

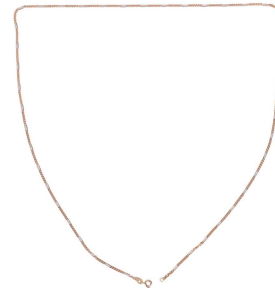


- 161 An aquamarine and diamond dress ring, claw-set with a pear-cut aquamarine of 16.9mm x 8.7mm x 5.8mm, between diamond-set shoulders, leading to a tapering flat shank in yellow metal stamped '14K', size O, 5.9 grams.

Please note: Unless otherwise stated, all diamond gradings are for guideline purposes only. All stones are graded within their mounts and results are subject to change following the stone(s) being unset. **£600-800**



- 162 A two-tone Figaro link necklace, completed with a spring-ring clasp, stamped '14K', overall length 61.0 cm, 6.3 grams. **£250-350**



Fine Jewellery, Watches & Silver, 18th Jun, 2026 09:30

- 163 An aquamarine and diamond dress ring, featuring an central claw-set round-cut aquamarine, flanked by shoulders of foliate design, grain-set with single-cut diamonds, the ring bordered by two rows of single-cut diamonds, to a 9ct gold ring shank, ring size S, 3.7 grams.
Please note: Unless otherwise stated, all diamond gradings are for guideline purposes only. All stones are graded within their mounts and results are subject to change following the stone(s) being unset. **£300-500**



- 164 An aquamarine dress ring in 18ct gold, claw-set with a rectangular aquamarine with canted corners, 6.8mm x 5.1mm x 3.7mm, between diamond-set shoulders to D-profile shank, British assay marks, size N, 2.4 grams. **£500-700**



- 165 A pair of diamond-set earrings and a matching pendant; The earrings each featuring a round brilliant-cut diamond of estimated 0.23ct, in a white metal rubover setting, to yellow metal post fittings surface testing as 18ct, with butterfly backs, 1.9 grams; The pendant of similar design, featuring a round brilliant-cut diamond of estimated 0.33ct in a white metal rubover setting, to a yellow metal pendant bale surface testing as 18ct, 1.0 grams. (2).
Please note: Unless otherwise stated, lots have been tested using an electronic tester. This is a surface test only and is not a guarantee of metal purity. **£300-500**



- 166 A figural pendant/brooch on chain, the pendant depicting a man and women in embrace, decorated with round brilliant-cut diamonds, the pendant also with brooch fittings to the reverse, stamped '585', the pendant/brooch measures approximately 4.5cm long, to a flat curb link chain, length approximately 60.0cm, the chain stamped '750' to the clasp, pendant/brooch weight 5.3 grams, chain 7.8 grams.
Please note: Unless otherwise stated, all diamond gradings are for guideline purposes only. All stones are graded within their mounts and results are subject to change following the stone(s) being unset. **£600-800**



- 167 A pair of earrings of stylised foliate design, by Kayo Saito, each constructed by a cluster of textured petals, fitted with ear peg and butterfly backs, in yellow metal testing as 18ct, 3.0 cm drop, in original case, 8.7 grams.
Please note: Unless otherwise stated, lots have been tested using an electronic tester. This is a surface test only and is not a guarantee of metal purity. **£500-700**



Fine Jewellery, Watches & Silver, 18th Jun, 2026 09:30

- 168 A textured necklace, comprising four rows of graduated length each with bark textured links, with a tongue and clip clasp and safety catch, stamped '750', the shortest length approximately 47.0cm, total weight 62.8 grams, with a box signed Garrard & Co. **£3,000-5,000**



- 169 Georg Jensen - A diamond-set 'Magic' link bracelet, designed by Regitze Overgaard, comprising a series of fancy links, with a conforming lever clasp, highlighted by four diamond accents, white metal stamped 'GJ' and '750', overall length 19.0cm, 28.1 grams.
With box, no papers. **£1,500-2,000**



- 170 Georg Jensen - A 'Dancing Ladies' necklace, designed by Bent Gabrielsen for Georg Jensen, design number 115, signed 'Georg Jensen 925 S Denmark', also bearing UK hallmarks for London 2014, necklace length approximately 46.0cm, weight 138.0 grams, with a Georg Jensen box. **£1,000-2,000**



- 171 Georg Jensen - A necklace of swollen rod form with five rods each with square pendant drops, designed by Astrid Fog, No. 123, post-1945 maker's mark, stamped '925', total weight of item 92.0 grams. **£600-800**



- 172 A diamond-set pendant on chain, featuring an oval-shaped panel grain-set with ten round brilliant-cut diamonds, with an estimated total carat weight of 0.70ct, the white metal pendant surface testing as 14ct, to a white metal cable-link chain completed with a lobster clasp marked '14K', necklace length 43.0cm, 3.4 grams.
Please note: Unless otherwise stated, lots have been tested using an electronic tester. This is a surface test only and is not a guarantee of metal purity.
Please note: Unless otherwise stated, all diamond gradings are for guideline purposes only. All stones are graded within their mounts and results are subject to change following the stone(s) being unset. **£300-500**

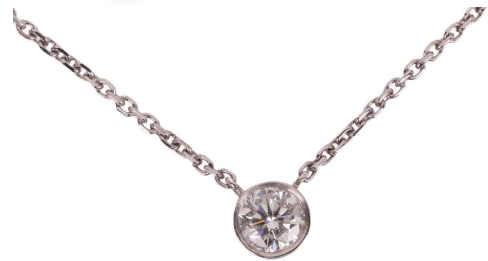


Fine Jewellery, Watches & Silver, 18th Jun, 2026 09:30

- 173 A diamond-set dress ring in 14ct white gold, the tapering concave band set with alternating rows of round-cut white and green diamonds, British assay marks, sponsor's mark 'R&D', size N½, 6.2 grams. **£600-800**



- 174 A diamond pendant on chain, featuring a round brilliant-cut diamond of 0.30ct, in a collet setting, fixed to an 18ct white gold cable link chain completed with a lobster clasp, necklace length 43.5cm, accompanied by a GIA Diamond Dossier stating the diamond is 0.30ct, F colour and VS2 clarity, 2.8 grams.



Please note: Unless otherwise stated, all diamond gradings are for guideline purposes only. All stones are graded within their mounts and results are subject to change following the stone(s) being unset. **£200-300**

- 175 A diamond solitaire ring, featuring a central round brilliant-cut diamond of estimated 0.63ct, in a twisted four-claw setting, to a platinum ring shank, ring size L, 3.3 grams.



Please note: Unless otherwise stated, all diamond gradings are for guideline purposes only. All stones are graded within their mounts and results are subject to change following the stone(s) being unset. **£300-500**

- 176 A baroque pearl and diamond pendant with alternative necklace, the pearl measuring approximately 17.74mm x 12.77mm, with a baguette-cut diamond mounted above, with detachable clasp, with separate white and yellow gold wires, both stamped '750', total weight 12.1 grams.



Please note: Unless otherwise stated, all diamond gradings are for guideline purposes only. All stones are graded within their mounts and results are subject to change following the stone(s) being unset. **£400-600**

- 177 A diamond solitaire ring, featuring a central claw-set round brilliant-cut diamond of estimated 0.23ct, to shoulders each pave-set with nine round brilliant-cut diamonds, to a white metal ring shank marked '750', ring size M 1/2, 2.1 grams.



Please note: Unless otherwise stated, all diamond gradings are for guideline purposes only. All stones are graded within their mounts and results are subject to change following the stone(s) being unset. **£250-350**

Fine Jewellery, Watches & Silver, 18th Jun, 2026 09:30

- 178 A diamond-set half eternity ring in 18ct white gold, set with graduated round brilliant-cut diamonds with an estimated total weight of 0.20ct, in a mount of scalloped design, leading to a D-profile shank, British assay marks, signed Jenny Packham, size P, 3.0 grams.
Please note: Unless otherwise stated, all diamond gradings are for guideline purposes only. All stones are graded within their mounts and results are subject to change following the stone(s) being unset. **£150-250**



- 179 A pair of diamond stud earrings, each claw-set with a round brilliant-cut diamond, with post and screw back fittings (one deficient), in 18ct white gold, accompanied by certificate from The Diamond Store, stating total carat weight is 0.40 carats, purchased in December 2014, weight 0.8 grams.

RRP: £685

Please note: Unless otherwise stated, all diamond gradings are for guideline purposes only. All stones are graded within their mounts and results are subject to change following the stone(s) being unset. **£200-300**



- 180 A diamond half eternity ring, comprising five princess-cut diamonds, with an estimated total carat weight of 1.00 carats, in a channel setting, bearing UK hallmarks for 18ct white gold, ring size N, weight 7.2 grams.
Please note: Unless otherwise stated, all diamond gradings are for guideline purposes only. All stones are graded within their mounts and results are subject to change following the stone(s) being unset. **£600-800**



- 181 A hinged bracelet, featuring three rows of grain-set natural and laboratory-grown diamonds, bracelet length 18.0cm, completed with an integral box clasp and additional safety catch, in yellow metal surface testing as 14ct, 20.9 grams.
Please note: Unless otherwise stated, all diamond gradings are for guideline purposes only. All stones are graded within their mounts and results are subject to change following the stone(s) being unset. **£700-900**



- 182 A diamond cluster ring, illusion-set with a central princess-cut diamond within a surround of four marquise-cut diamonds, approximately 2.0ct total, mounted in 18ct white gold, stamped with partial Birmingham hallmark and European convention mark, ring size M, gross weight 5.08 grams.
Please note: Unless otherwise stated, all diamond gradings are for guideline purposes only. All stones are graded within their mounts and results are subject to change following the stone(s) being unset. **£1,000-2,000**



Fine Jewellery, Watches & Silver, 18th Jun, 2026 09:30

- 183 An aquamarine and diamond cocktail ring, comprising a large rectangular step-cut aquamarine with canted corners, approximately measuring 18.5mm x 14.5mm x 8.7mm, conforming surround and shoulders pave-set with brilliant-cut diamonds, in white metal stamped '750', size M, 11.7 grams. **£1,200-1,800**



- 184 A diamond solitaire ring, featuring a central claw-set oval-cut diamond of estimated 0.92ct, to a platinum ring shank, ring size J 1/2, accompanied by a diamond grading report, 3.3 grams.
Please note: Unless otherwise stated, all diamond gradings are for guideline purposes only. All stones are graded within their mounts and results are subject to change following the stone(s) being unset. **£1,500-2,000**



- 185 Theo Fennell - A diamond-set closed bangle in 18ct yellow gold, comprising a heavy D-profile band, flush-set with twelve brilliant-cut diamonds with an estimated total weight of 0.68ct, signed and hallmarked, London 2006, inner diameter 7.1 cm, 37.0 grams. With box and pouch, no papers. **£2,000-3,000**



- 186 Boodles - A diamond-set hinged bangle, composed of five sections, each claw-set with brilliant-cut diamonds, to a single collet-set push brilliant-cut diamond, stated weight 1.40cts, mounted in 18ct white gold, signed, stamped with maker's mark, London hallmark and numbered 1122221154, inner diameter 6cm, gross weight 26.68 grams. **£2,500-3,500**



- 187 Boodles - A diamond-set hinged bangle, composed of seven sections, each four-claw set with round brilliant-cut diamonds, stated weight 0.63ct total, mounted in 18ct rose gold stamped with maker's mark, London hallmark, numbered '112222310' and signed, inner diameter 5.4cm, gross weight 22.53 grams. **£1,500-2,500**



Fine Jewellery, Watches & Silver, 18th Jun, 2026 09:30

- 188 Boodles - A pair of 'Roulette' flip earrings, each featuring a circular motif grain-set with fourteen round brilliant-cut diamonds, the reverse with a plain polished finish, in 18ct yellow gold, to post fittings with butterfly backs, signed 'Boodles', earring drop length approximately 1.1cm, boxed, 6.21 grams. **£800-1,200**



- 189 Bulgari - A diamond-set tubogas open bangle, comprising a flexible stainless steel tubogas band with terminals set with round brilliant-cut diamond accents, signed and struck with Italian assay marks for 18ct, inner diameter 5.7cm, official size 'M', 36.2 grams. With box, no papers. **£1,500-2,500**



- 190 Boucheron - A diamond-set Kaa Double Trouble snake ring, the head pave-set with brilliant-cut diamonds, the eyes decorated with cabochon pear-shaped onyx, the body gypsy-set with thirteen brilliant-cut diamonds, stated weight 0.25ct total, signed, numbered 'E26478', stamped '750', with maker's case and box, and authenticity card, ring size L / M1/2, gross weight 14.18 grams. **£2,000-3,000**



- 191 Damiani - A diamond necklace from the Gemilli collection, composed of graduated, articulated scrolling links, pavé-set with round brilliant-cut diamonds, with diamond-set spacers, completed with a concealed push-button clasp with a safety clasp, with applied maker's plaque and Italian '750' mark, outer length 44.0cm, total diamond weight estimated to be between 9 and 10 carats; Gross weight 68.7 grams. Please note: Unless otherwise stated, all diamond gradings are for guideline purposes only. All stones are graded within their mounts and results are subject to change following the stone(s) being unset. **£5,000-7,000**



- 192 DeBeers - An 'Arpeggia' diamond pendant necklace, comprising four graduating claw-set round brilliant-cut diamonds, with a grain-set diamond bar spacer, the pendant with an estimated total diamond carat weight of 0.65ct, to an 18ct white gold cable-link chain, completed with a lobster clasp signed 'DeBeers' and numbered 'D96904', necklace length ranging from 39.0cm - 45.0cm, 3.6 grams.



RRP: £4,800

Please note: Unless otherwise stated, all diamond gradings are for guideline purposes only. All stones are graded within their mounts and results are subject to change following the stone(s) being unset. **£1,500-2,500**

Buyers Premium 27.5% + VAT. Fully illustrated catalogue at dawsonsauctions.co.uk.

Fine Jewellery, Watches & Silver, 18th Jun, 2026 09:30

- 193 De Beers - A pair of Arpeggia single line drop earrings, with an estimated total diamond carat weight of 1.30ct, earring drop length 1.95mm, in 18ct white gold, stamped with De Beers hallmark, to post fittings with guardian earring backs, in De Beers pouch, 2.1 grams.
Please note: Unless otherwise stated, all diamond gradings are for guideline purposes only. All stones are graded within their mounts and results are subject to change following the stone(s) being unset. **£2,500-3,500**



- 194 DeBeers - An 'Arpeggia' diamond necklace, composed of a line of grain-set round brilliant-cut diamonds interspersed with graduating claw-set round brilliant-cut diamonds, with an estimated total diamond carat weight of 6.79ct, accompanied by three DeBeers diamond grading reports for the three principal stones (0.50ct, 0.38ct and 0.38ct respectively), ranging from D VS1 to G VS2, completed with an integral box clasp marked 'D96822', with additional safety catch, the necklace signed 'DeBeers' and hallmarked for 18ct white gold, necklace length approximately 38.0cm, boxed, 14.5 grams. RRP: £34,100
Please note: Unless otherwise stated, all diamond gradings are for guideline purposes only. All stones are graded within their mounts and results are subject to change following the stone(s) being unset. **£10,000-15,000**



- 195 A diamond single stone ring, set with a round brilliant-cut diamond weighing approximately 1.55 carats, in a six claw setting, in 18ct white gold, ring size M, weight 3.5 grams.
Please note: Unless otherwise stated, all diamond gradings are for guideline purposes only. All stones are graded within their mounts and results are subject to change following the stone(s) being unset. **£1,500-2,500**



- 196 A pair of diamond stud earrings, each featuring a round brilliant cut diamond in a four-claw setting, (estimated diamond weight 1.23ct and 1.32ct and K/L VS), with post and butterfly fittings, the butterflies stamped 750, weight 2.9 grams.
Please note: Unless otherwise stated, all diamond gradings are for guideline purposes only. All stones are graded within their mounts and results are subject to change following the stone(s) being unset. **£1,500-2,000**



Fine Jewellery, Watches & Silver, 18th Jun, 2026 09:30

- 197 Moussaieff - A diamond necklace, with an estimated total diamond weight of 11.65ct, comprising a series of teardrop-shaped clusters in highly articulated claw mounts, each cluster is composed of princess-cut, pear-cut and marquise-cut diamonds, completed with a concealed tongue clasp, signed "Moussaieff" in unmarked white metal testing as 18ct, pendant 1.5 cm drop, overall length 41.5 cm, 30.0 grams.

With box.

Please note: Unless otherwise stated, all diamond gradings are for guideline purposes only. All stones are graded within their mounts and results are subject to change following the stone(s) being unset. **£8,000-12,000**



- 198 An emerald and diamond cluster ring, featuring a central oval-shaped emerald of estimated 3.62ct, measuring 11.5mm x 9.5mm x 5.8mm, the emerald of dark yellowish-green colour, encircled by ten round brilliant-cut diamonds, with an estimated combined carat weight of 2.30ct, to an 18ct yellow gold ring shank, ring size R 1/2, 13.7 grams.

Please note: Unless otherwise stated, all diamond gradings are for guideline purposes only. All stones are graded within their mounts and results are subject to change following the stone(s) being unset. **£3,000-5,000**



- 199 An emerald and diamond collar necklace, the collar composed of alternating rows of oval mixed-cut emeralds and round brilliant-cut diamonds, gathered across in two points with additional diamond-set rows, leading to diamond-set figure-of-eight and emerald-set links, with a box-shaped push clasp and hinged safety catch, the diamonds graduated in size from approximately 1.7mm to 3.2mm and the emeralds graduated in size from approximately 4.5mm x 3.5mm to 6.0mm x 4.0mm, the necklace in yellow metal surface testing as 18ct, necklace length approximately 38.0cm, 76.6 grams.

Please note: Unless otherwise stated, lots have been tested using an electronic tester. This is a surface test only and is not a guarantee of metal purity.

Please note: Unless otherwise stated, all diamond gradings are for guideline purposes only. All stones are graded within their mounts and results are subject to change following the stone(s) being unset. **£12,000-18,000**



- 200 An emerald and diamond bracelet, comprising panels of round faceted bezel-set emeralds, and panels of pave-set diamonds in a brick link design, with a concealed tongue and clip clasp and two figure of eight safety catches, unmarked, yellow metal surface testing as 18ct, bracelet length approximately 18.5cm, weight 70.0 grams.

Please note: Unless otherwise stated, all diamond gradings are for guideline purposes only. All stones are graded within their mounts and results are subject to change following the stone(s) being unset. **£7,000-8,000**



Fine Jewellery, Watches & Silver, 18th Jun, 2026 09:30

- 201 A ruby and diamond collar necklace, comprising nine claw-set rows alternating between round-cut rubies of reddish pink colour and round brilliant-cut diamonds, the nine rows terminating at each end with a stylised bow motif, highlighted with ruby and diamond accents, the bow motifs extending to a row of claw-set rubies and diamonds, the estimated total diamond weight being approximately 13.08ct, the necklace completed with an integral box clasp, all claw set in yellow metal surface testing as 14ct, approximate necklace length 38.5cm, collar width 3.2cm, 186.0 grams.
Please note: Unless otherwise stated, all diamond gradings are for guideline purposes only. All stones are graded within their mounts and results are subject to change following the stone(s) being unset. **£12,000-18,000**



- 202 A ruby and diamond Art Deco-style bracelet, featuring three links channel-set with square-cut rubies of reddish-pink colour, the channels encircling a central square panel grain-set with nine round brilliant-cut diamonds, the ruby-set links interspersed by links articulated in two halves, with openwork detail and fully grain-set with round brilliant-cut diamonds, the larger links connected with diamond-set connecting links of stylised buckle design, the estimated total diamond carat weight for the bracelet being 8.43ct, in white metal surface testing as 18ct, bracelet measuring 18.2cm in length, 1.7cm in width, completed with an integral box clasp with two additional safety catches, 53.7 grams.
Please note: Unless otherwise stated, all diamond gradings are for guideline purposes only. All stones are graded within their mounts and results are subject to change following the stone(s) being unset. **£6,000-8,000**



- 203 **Bueche Girod - 18ct White Gold Gem-Set Cocktail Watch, with Lapis Lazuli Dial**
Year: Hallmarked 1972
Bezel: Claw-set with Round Brilliant-cut Diamonds and Round-cut Blue Sapphires
Case Material: 18ct White Gold
Case Diameter: 26mm x 24mm
Dial: Lapis Lazuli, Dauphine Hands
Numerals: None
Crown: Signed, Fluted
Movement: Bueche Girod 17-Jewel Manual Wind Movement
Strap: Integral 18ct White Gold Bark-Texture Mesh Bracelet
Inner Circumference: Approximately 16.5cm
Buckle: Slide-Lock Clasp with Fold-Over Catch
Box: Yes
Papers: No
Gross Weight: 52.5 grams
For your protection, every watch with an estimate over £1,500 is checked against the Watch Register. This is an independent company who hold the world's largest, most established, international database of lost, stolen, and fake watches, containing data compiled over 35 years - providing Dawsons' buyers with complete peace of mind. **£2,500-3,500**



Fine Jewellery, Watches & Silver, 18th Jun, 2026 09:30

204

Longines - '18K' Dress Watch

Reference: L6.107.6 (Case Back marked internally '1019/963')

Serial: 29996446

Year: Purchased May 2004

Bezel: Smooth

Case Material: '18K' Yellow Metal

Case Diameter: Approximately 18mm

Dial: White, Pointed Baton Hands

Numerals: Roman, Dot

Crown: Fluted

Movement: Longines Calibre L963.2 (ETA Calibre 280.002)

Five-Jewel Quartz Movement

Strap: Integral Brick-Link Bracelet

Inner Circumference: Approximately 15.5cm

Buckle: Signed, 18ct Fold Over Clasp

Box: No

Papers: Original Purchase Receipt, Insurance Valuation and Longines Booklet Only.

Gross Weight: 27.4 grams

For your protection, every watch with an estimate over £1,500 is checked against the Watch Register. This is an independent company who hold the world's largest, most established, international database of lost, stolen, and fake watches, containing data compiled over 35 years - providing Dawsons' buyers with complete peace of mind. **£1,500-2,000**



205

Diamond-Set Cocktail Watch

Bezel: Diamond-Set

Case Material: White Metal Surface Testing as 14ct

Case Diameter: Approximately 13mm x 18mm

Dial: White (Discoloured), Blued Baton Hands

Numerals: Arabic, Minute Track

Crown: Fluted

Movement: After-Market F.E. Calibre 6820 One-Jewel Quartz Movement

Strap: After-Market Mesh Rope Bracelet

Inner Circumference: Approximately 17.0cm

Buckle: 9ct Gold Fold-Over Clasp with Additional Safety Catch

Box: No

Papers: No

Gross Weight: 15.5 grams

Please note: Unless otherwise stated, lots have been tested using an electronic tester. This is a surface test only and is not a guarantee of metal purity. **£400-600**



Fine Jewellery, Watches & Silver, 18th Jun, 2026 09:30

- 206 **Baume & Mercier - Hampton**
Reference: 65488
Serial: 3853310
Bezel: Smooth
Case Material: Stainless Steel
Case Diameter: Approximately 22mm x 20mm
Dial: Silvered, Scalloped Sunburst
Numerals: Arabic at twelve, three and nine o'clock, Baton
Crown: Smooth, Oval, Diamond-Set
Movement: Baume & Mercier Calibre 7425 (ETA Calibre 956.112) Seven-Jewel Quartz Movement
Complication: Date Aperture at six o'clock
Strap: Signed, Yellow Leather-Effect Strap
Inner Circumference: Approximately 15.0cm - 18.5cm
Buckle: Signed Stainless Steel Buckle
Box: No
Papers: No
Gross Weight: 24.6 grams **£200-300**
- 207 **Rolex - 9ct Gold Dress Watch**
Reference: 503
Serial: 36956
Bezel: Engine-Turned Texture
Case Material: 9ct Gold
Case Diameter: 22mm
Dial: White, Blued Pointed Baton Hands
Numerals: Baton
Crown: Fluted
Movement: Rolex Prima 15-Jewel Manual Wind Movement
Strap: After-Market Black Strap
Inner Circumference: Approximately 15.5cm - 19.5cm
Buckle: Signed, Gold-Plated Buckle
Box: No
Papers: No
Gross Weight: 24.0 grams **£500-700**
- 208 **Rolex - Oyster Perpetual Date**
Reference: 69173 (Case Back marked internally '69000A')
Serial: 9053227
Bezel: Fluted
Case Material: Stainless Steel
Case Diameter: 24mm
Dial: Gold-Tone, Baton Hands with Luminous Inserts
Numerals: Baton, Minute Track
Crown: Rolex Twinlock
Movement: Rolex Calibre 2135 29-Jewel Automatic Movement, numbered '395112'
Complication: Date Aperture at three o'clock with Cyclops Magnifier
Strap: Rolex Jubilee Bi-Metal Strap, numbered '468 B'
Inner Circumference: Approximately 16.0cm
Buckle: Signed, Stainless Steel Fold-Over Clasp, numbered '62523D 18'
Box: Yes
Papers: No
Gross Weight: 51.0 grams **£1,200-1,800**



Fine Jewellery, Watches & Silver, 18th Jun, 2026 09:30

209

Cartier - Santos Automatique

Reference: 0901

Serial: 01857

Bezel: Smooth, Screw Detail

Case Material: Stainless Steel

Case Diameter: Approximately 23mm x 23mm

Dial: White, Blued Sword Hands

Numerals: Black Roman Numerals, Minute Track

Crown: Blue Faceted Stone

Movement: Automatic

Strap: Stainless Steel Bracelet with Screw Detail

Inner Circumference: Approximately 17.5cm

Buckle: Signed, Stainless Steel Fold-Over Clasp

Box: No

Papers: No

Gross Weight: 58.3 grams

Please note this watch has not been opened. The movement has not been checked and therefore cannot be guaranteed. For your protection, every watch with an estimate over £1,500 is checked against the Watch Register. This is an independent company who hold the world's largest, most established, international database of lost, stolen, and fake watches, containing data compiled over 35 years - providing Dawsons' buyers with complete peace of mind. **£1,500-2,500**



210

Cartier - Tank Francaise (Medium Model)

Reference: 2465

Serial: 479120CE

Year: Purchased 2004

Bezel: Smooth

Case Material: Stainless Steel

Case Diameter: Approximately 24mm x 20mm

Dial: White, Signed at seven o'clock, Blued Sword Hands

Numerals: Roman, Minute Track

Crown: Blue Cabochon

Movement: Cartier Calibre 175N Eight-Jewel Quartz Movement

Complication: Date Aperture at three o'clock

Strap: Bi-Metal Bracelet marked 'UFJC'

Inner Circumference: Approximately 16.0cm

Buckle: Signed, Stainless Steel Double Fold-Over Clasp

Box: No. Travel Pouch Only.

Papers: No

Gross Weight: 83.3 grams

For your protection, every watch with an estimate over £1,500 is checked against the Watch Register. This is an independent company who hold the world's largest, most established, international database of lost, stolen, and fake watches, containing data compiled over 35 years - providing Dawsons' buyers with complete peace of mind. **£2,000-3,000**



Fine Jewellery, Watches & Silver, 18th Jun, 2026 09:30

211 Cartier - Roadster (Large Model)

Reference: 2510

Serial: 243437CE

Year: Purchased March 2006

Bezel: Smooth

Case Material: Stainless Steel

Case Diameter: Approximately 35mm x 34mm, Tonneau Shaped

Dial: Black, Signed at seven o'clock, Luminous Sword Hands

Numerals: Roman, Minute Track

Crown: Fluted

Movement: Cartier Calibre 3110 (ETA Calibre 2892A2) 21-Jewel Automatic Movement

Complication: Date Aperture with Magnifier at three o'clock

Strap: Stainless Steel Bracelet

Inner Circumference: Approximately 20.0cm

Buckle: Signed, Stainless Steel Double Fold-Over Clasp

Box: Box and Travel Pouch

Papers: Certificate and Service Booklet, Roadster Instructions Booklet, Care Guide Booklet and Original Purchase Receipt Only. Accompanied by Cartier Watch Catalogue.

Gross Weight: Approximately 142.0 grams

For your protection, every watch with an estimate over £1,500 is checked against the Watch Register. This is an independent company who hold the world's largest, most established, international database of lost, stolen, and fake watches, containing data compiled over 35 years - providing Dawsons' buyers with complete peace of mind. **£1,000-2,000**



212 Omega - De Ville Automatic Dress Watch

Bezel: Smooth

Case Material: Yellow Metal Surface Testing as 18ct

Case Diameter: 36mm

Dial: Silvered, Brushed, Pointed Baton Hands with Luminous Inserts

Numerals: Baton, Minute Track

Crown: Signed, Fluted

Movement: Automatic

Complication: Date Aperture at three o'clock

Strap: After-Market Gold-Plated Brick-Link Bracelet

Inner Circumference: Approximately 16.0cm

Buckle: After-Market Gold-Plated Fold-Over Clasp

Box: No

Papers: No

Gross Weight: 74.5 grams

Please note this watch has not been opened. The movement has not been checked and therefore cannot be guaranteed. Please note: Unless otherwise stated, lots have been tested using an electronic tester. This is a surface test only and is not a guarantee of metal purity. **£800-1,200**



Fine Jewellery, Watches & Silver, 18th Jun, 2026 09:30

- 213 **Tudor - Oyster 'Bumper' Automatic**
Reference: 951
Serial: 41186
Year: circa late 1940s
Bezel: Smooth
Case Material: Stainless Steel
Case Diameter: 34mm
Dial: Silvered
Numerals: Arabic at Even, Pointed Baton at Odd, Minute Track



Crown: Rolex Twinlock
Movement: Automatic
Strap: After-Market Black Leather Strap
Inner Circumference: Approximately 16.5cm - 21.0cm
Buckle: After-Market Buckle
Box: No
Papers: No
Gross Weight: 38.0 grams.
 Please note this watch has not been opened. The movement has not been checked and therefore cannot be guaranteed.
£300-500

- 214 **Zenith - Elite Automatic 680**
Reference: 90/010040 680
Bezel: Smooth
Case Material: Stainless Steel
Case Diameter: Approximately 35mm
Dial: Blue, Concentric Texture, Dauphine Hands with Luminous Inserts
Numerals: Baton, Minute Track
Crown: Signed, Fluted
Movement: Zenith Elite Calibre 680 26-Jewel Automatic Movement, numbered '7739'
Complication: Date Aperture at three o'clock, Seconds Subsidiary Dial at nine o'clock
Strap: After-Market Blue Leather Strap
Inner Circumference: Approximately 17.0cm - 22.0cm
Buckle: After-Market Buckle
Box: No
Papers: No
Gross Weight: Approximately 43.0 grams **£300-500**



Fine Jewellery, Watches & Silver, 18th Jun, 2026 09:30

- 215 **Breitling - Chronomat Blackbird**
Reference: A13350
Serial: 291942
Bezel: Uni-Directional
Case Material: Stainless Steel
Case Diameter: Approximately 40mm
Dial: Black, Luminous Hands, Tachymetre to Rehaut
Numerals: Luminous Baton, Minute Track
Crown: Fluted
Movement: Breitling (ETA Calibre 7750) 25-Jewel Automatic Movement, numbered '291942'
Complication: Date Aperture at three o'clock, 12-Hour Subsidiary Dial at six o'clock, Seconds Subsidiary Dial at nine o'clock, 30-Minute Subsidiary Dial at twelve o'clock, Centre Chronography Seconds
Strap: Signed Rubber Strap, marked '20-18' '132S'
Inner Circumference: Approximately 18.5cm - 24.5cm
Buckle: Signed Stainless Steel Buckle
Box: Yes
Papers: Chronometer Certificate, International Warranty Booklet, Breitling Chronomat Booklet and Authorized Distributors Booklet Only.
Gross Weight: 106.4 grams **£800-1,200**



- 216 **Omega - Seamaster Planet Ocean Skyfall**
Reference: 23230422101004
Serial: 86166677 (To Movement)
Edition: 4981/5007
Year: Purchased May 2014
Bezel: Uni-Directional
Case Material: Stainless Steel
Case Diameter: 42mm
Dial: Black Textured Dial, Luminous Arrow Hands
Numerals: Luminous Baton, Arabic at six and nine o'clock, 007 at seven o'clock, Minute Track
Crown: Signed, Fluted, Helium Escape Valve at ten o'clock
Movement: Omega Calibre 8507 39-Jewel Automatic Movement, numbered '86166677'
Complication: Date Aperture at three o'clock
Strap: Stainless Steel Bracelet
Inner Circumference: Approximately 20.0cm
Buckle: Signed, Stainless Steel Push-Button Fold-Over Clasp
Box: Yes
Papers: Yes, International Warranty Card, Chronometer Certificate Card, Limited Series Card, Pictograms Card, Operating Instructions Booklet and Skyfall Booklet Only.
Gross Weight: 197.0 grams
 For your protection, every watch with an estimate over £1,500 is checked against the Watch Register. This is an independent company who hold the world's largest, most established, international database of lost, stolen, and fake watches, containing data compiled over 35 years - providing Dawsons' buyers with complete peace of mind. **£3,000-5,000**



Fine Jewellery, Watches & Silver, 18th Jun, 2026 09:30

217

Breitling - Navitimer Cosmonaute

Reference: 809

Serial: 1023442

Bezel: Bi-Directional

Case Material: Stainless Steel

Case Diameter: 40mm

Dial: Black, Pointed Baton Hands with Luminous Inserts

Numerals: Luminous Arabic

Crown: Signed, Fluted, Two Chronograph Pushers

Movement: Breitling (Venus Calibre 178) 17-Jewel Manual Wind Movement

Complication: 30-Minute Subsidiary Dial at three o'clock, 12-Hour Subsidiary Dial at six o'clock, Seconds Subsidiary Dial at nine o'clock, Centre Chronograph Seconds

Strap: After-Market Black Canvas Strap

Inner Circumference: Approximately 18.0cm - 21.5cm

Buckle: Signed Stainless Steel Buckle

Box: No

Papers: No

Gross Weight: 66.7 grams

For your protection, every watch with an estimate over £1,500 is checked against the Watch Register. This is an independent company who hold the world's largest, most established, international database of lost, stolen, and fake watches, containing data compiled over 35 years - providing Dawsons' buyers with complete peace of mind. **£2,500-3,500**



218

Aquastar - Deepstar 'Big Eye'

Reference: 515.666

Year: circa 1960s

Bezel: Bi-Directional

Case Material: Stainless Steel

Case Diameter: 38mm

Dial: Purplish-Brown, Sunburst, Luminous Baton Hands

Numerals: Luminous Baton, Luminous Dot, Minute Track

Crown: Signed, Fluted

Complication: 30-Minute Subsidiary Dial at three o'clock, Subsidiary Seconds at nine o'clock

Strap: Deficient

Buckle: Deficient

Box: No

Papers: No

Gross Weight: 59.0 grams

Please note this watch has not been opened. The movement has not been checked and therefore cannot be guaranteed. For your protection, every watch with an estimate over £1,500 is checked against the Watch Register. This is an independent company who hold the world's largest, most established, international database of lost, stolen, and fake watches, containing data compiled over 35 years - providing Dawsons' buyers with complete peace of mind. **£2,500-3,500**



Fine Jewellery, Watches & Silver, 18th Jun, 2026 09:30

219 Heuer - '18K' Chronograph Dress Watch

Reference: 68230

Serial: 405529 (To Movement)

Year: circa 1945

Bezel: Smooth

Case Material: '18K' Yellow Metal

Case Diameter: Approximately 35mm

Dial: Cream, Leaf Hands, Red Chronograph Centre Seconds

Numerals: Arabic at Twelve and Six o'clock, Dot, Minute Track

Crown: Fluted

Movement: Heuer 17-Jewel Manual Wind Movement, numbered '405529'

Complication: 30-Minute Subsidiary Dial at three o'clock,

Seconds Subsidiary Dial at nine o'clock

Strap: After Market Brown leather Strap

Inner Circumference: Approximately 17.0cm - 21.0cm

Buckle: After-Market Gold-Plated Buckle

Box: No

Papers: No

Gross Weight: 45.9 grams

For your protection, every watch with an estimate over £1,500 is checked against the Watch Register. This is an independent company who hold the world's largest, most established, international database of lost, stolen, and fake watches, containing data compiled over 35 years - providing Dawsons' buyers with complete peace of mind. **£1,500-2,500**



220 Patek Philippe - Dress Watch

Reference: 1473/1

Serial: 630612

Bezel: Smooth

Year: circa 1945

Case Material: Stainless Steel

Case Diameter: Approximately 30mm

Dial: Champagne, Blued Pointed Baton Hands

Numerals: Roman at Twelve, Three, Six and Nine o'clock

Crown: Fluted

Movement: Patek Philippe 18-Jewel Manual Wind Movement, Adjusted to Five Positions, Three Heat, Cold, Isochronism, numbered '912.199'

Complication: Seconds Subsidiary Dial at six o'clock

Strap: After-Market Brown Leather Strap

Inner Circumference: Approximately 18.5cm - 22.5cm

Buckle: After-Market Gold-Plated Buckle

Box: No

Papers: No. Extract from Archives Only.

Gross Weight: 33.9 grams

For your protection, every watch with an estimate over £1,500 is checked against the Watch Register. This is an independent company who hold the world's largest, most established, international database of lost, stolen, and fake watches, containing data compiled over 35 years - providing Dawsons' buyers with complete peace of mind. **£4,000-6,000**



Fine Jewellery, Watches & Silver, 18th Jun, 2026 09:30

221

Jaeger-LeCoultre - Master Control Calendar

Reference: 140.8.87

Serial: 2757280 (To Movement)

Year: Purchased Approximately 1998

Bezel: Smooth

Case Material: Stainless Steel

Case Diameter: Approximately 36mm

Dial: Silvered, Sunburst, Dauphine Hands with Luminous Inserts

Numerals: Arabic at twelve, three and nine o'clock, Pointed Baton

Crown: Signed, Fluted

Movement: Jaeger-LeCoultre Calibre 891/2/447

Complication: Seconds Subsidiary Dial at six o'clock

Strap: After-Market Brown Alligator Leather Strap.

Accompanied by Jaeger-LeCoultre Stainless Steel Bracelet (One Termination Deficient)

Inner Circumference: Approximately 17.0cm - 22.0cm

Buckle: Stainless Steel Fold-Over Clasp

Box: Yes

Papers: No. Accompanied by Service Receipt dated May 2018



Gross Weight: 66.0 grams (Excluding Additional Jaeger-LeCoultre Bracelet)

Please note this watch has not been opened. The movement has not been checked and therefore cannot be guaranteed.

Please Note: This lot contains a restricted species and therefore may be subject to additional shipping restrictions or regulations. Buyers are solely responsible for adhering to all regulations regarding the import/export of this lot prior to bidding. Buyers must obtain all necessary licences at their own expense. Inability to import/export this lot, or seizure by a government agency, does not justify delayed payment or cancellation of sale.

For your protection, every watch with an estimate over £1,500 is checked against the Watch Register. This is an independent company who hold the world's largest, most established, international database of lost, stolen, and fake watches, containing data compiled over 35 years - providing Dawsons' buyers with complete peace of mind. **£2,000-3,000**

Fine Jewellery, Watches & Silver, 18th Jun, 2026 09:30

222

Ulysse Nardin - Michelangelo Triple Calendar

Reference: 331-41

Serial: 1288

Bezel: Smooth

Case Material: '18 carats gold', Exhibition Case Back

Case Diameter: Approximately 28mm x 34mm

Dial: Cream, Blued Hands, Three Mother of Pearl Subsidiary Dials and Moonphase Aperture

Numerals: Baton, Minute Track

Crown: Fluted

Movement: Ulysse Nardin Calibre ND10C 21-Jewel Manual Wind Movement, numbered '042720'

Complication: Date Subsidiary Dial at twelve o'clock, Month Subsidiary Dial at three o'clock, Moonphase Aperture and Lunar Cycle Subsidiary Dial at six o'clock, Day Subsidiary Dial at nine o'clock

Strap: After-Market Brown Alligator Leather Strap

Inner Circumference: Approximately 17.0cm - 20.0cm

Buckle: After-Market Gold-Plated Base Metal Buckle

Box: No. Pouch Only.

Papers: International Guarantee Card, Michelangelo Instruction Booklet. Additionally accompanied by a Chronoswiss Moonphase Booklet for 1987-1999.

Gross Weight: 61.2 grams

Please Note: This lot contains a restricted species and therefore may be subject to additional shipping restrictions or regulations. Buyers are solely responsible for adhering to all regulations regarding the import/export of this lot prior to bidding. Buyers must obtain all necessary licences at their own expense. Inability to import/export this lot, or seizure by a government agency, does not justify delayed payment or cancellation of sale.

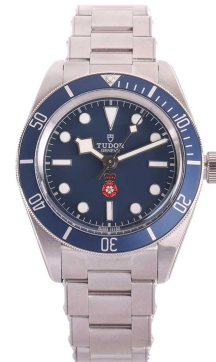
For your protection, every watch with an estimate over £1,500 is checked against the Watch Register. This is an independent company who hold the world's largest, most established, international database of lost, stolen, and fake watches, containing data compiled over 35 years - providing Dawsons' buyers with complete peace of mind. **£4,000-6,000**



Fine Jewellery, Watches & Silver, 18th Jun, 2026 09:30

223 Tudor - Black Bay 58 RaSP Platinum Jubilee Limited Edition

Reference: 79030B
Serial: M9Y0462
Edition: 81/300
Year: May 2022
Bezel: Uni-Directional
Case Material: Stainless Steel
Case Diameter: 39mm
Dial: Blue, Luminous Hands
Numerals: Luminous Baton, Luminous Dot, Minute Track
Crown: Signed, Fluted
Movement: Tudor Calibre MT5402 27-Jewel Automatic Movement
Strap: Stainless Steel, numbered '72040'
Inner Circumference: Approximately 20.0cm
Buckle: Stainless Steel Deployant Clasp
Box: Yes
Papers: Yes. International Guarantee Card, User Manual, Service Network Booklet and Swing Tag Only.
Gross Weight: 144.9 grams



For your protection, every watch with an estimate over £1,500 is checked against the Watch Register. This is an independent company who hold the world's largest, most established, international database of lost, stolen, and fake watches, containing data compiled over 35 years - providing Dawsons' buyers with complete peace of mind. **£8,000-12,000**

224 Money & Bassold - An 18ct Gold Open Face Pocket Watch

Reference: 18032
Year: Hallmarked 1932
Case Material: 18ct Gold
Case Diameter: Approximately 55mm
Dial: White, Poire Hands
Numerals: Roman, Minute Track
Movement: Key-Wound (Key Deficient), Signed 'Money & Bassold, London' and numbered '18032'
Complication: Seconds Subsidiary Dial at six o'clock
Box: No
Papers: No
Gross Weight: 146.5 grams **£2,000-3,000**



225 18ct Open Face Pocket Watch

Reference: 4331
Case Material: 18ct Gold
Case Diameter: Approximately 48mm
Dial: White, Poire Hands
Numerals: Roman, Minute Track
Movement: Keyless Wound
Complication: Seconds Subsidiary Dial at six o'clock
Box: No
Papers: No
Gross Weight: 77.6 grams **£1,500-2,000**



Fine Jewellery, Watches & Silver, 18th Jun, 2026 09:30

- 226 **An '18K' Open Face Pocket Watch**
Reference: 18569
Case Material: Yellow Metal marked '18K'
Case Diameter: Approximately 42mm
Dial: White, Poire Hands
Numerals: Black Roman Numerals, Minute Track
Movement: Key-Wound
Complication: Seconds Subsidiary Dial at six o'clock
Box: No
Papers: No
Gross Weight: 54.6 grams **£1,000-2,000**



- 227 A Baker's Pointer propelling pencil in 9ct gold, barrel with engine-turned pattern and a vacant rectangular cartouche, Edward Baker and Sons, Birmingham 1927, 11.5 cm, in an Asprey case, 34.6 grams. **£600-800**



- 228 A Victorian tortoiseshell cheroot holder case mounted in 9ct gold, the tapered tubular body terminated with a cap and suspension loop, and a hinged cap with turquoise-set thumbpiece, Birmingham 1898, 8.5 cm in length, 11.2 grams. **£200-300**



- 229 A silver-plated cocktail shaker, modelled as a zeppelin, with two detachable parts, not signed, approx. 32.0 cm high. **£100-150**



- 230 Of Military Interest - A Royal Artillery silver table lighter in the form of a flaming grenade, sponsor's mark for Turner & Simpson, Birmingham 1931, 8.5cm high, weighted; together with a silver-plated castle inkwell with bird finial. (2) **£250-350**



Fine Jewellery, Watches & Silver, 18th Jun, 2026 09:30

- 231 A silver table bell with scrolling repousse work design, by Synyer & Beddoes, Birmingham 1919 and a silver-mounted scent bottle, with circular cut glass bottle and a hinged silver cap, marks for Birmingham 1913 (partially rubbed) (2). **£150-250**



- 232 A French 18th-century silver gilt snuff box, and another; the oval snuff box with repousse work all over, depicting baroque trophies to the cover and base, within oval laurel with ribbon, batons and floral panels to the sides, Paris 1753 mark, and mark for article for export, as well as later Dutch import marks for .925, 6.2 wide; together with another Continental snuffbox depicting a courting couple to the cover, with British import marks for 1926; Total weight of items 106.5 grams (3.42 ozt). (2) **£100-200**



- 233 A small collection of silver cases; to include four George III vinaigrettes, with different makers and dates, to include examples by John Shaw and Thomas Edwards, all with gilt interior and pierced grille, in various sizes; a sovereign case with floral engravings, and a pill box with a repousse cover depicting a courting couple, twist open to reveal hair locks; all with British assay marks, total weight of items 114.7 grams. (6) (Qty: 5) **£350-450**



- 234 An unusual folding cigarette case and a hip flask; the four-fold cigarette case by Georg Adam Scheid (Austrian 1838-1912), rounded rectangular form with engined-turned patterns to front and back, hinged cover with sapphire cabochon thumbpiece and engraved name dated 1924, opening to reveal compartments with gilt interior, and later inscription dated 1947, Austrian assay marks for .900 silver, maker's mark G.A.S, dimensions 48.5cm long when fully expanded, 13.0cm x 9.0cm when folded; together with a silver half-pint hip flask, Birmingham 1924, 12.0cm x 10.0cm; total weight of items 625.5 grams (20.11 ozt). (2). **£500-700**



- 235 A George III Scottish soup ladle; Old English pattern, with crest engraved to the terminal. Edinburgh 1790 by William Robertson. 37cm length, 5.9ozt, 184.7 grams. **£200-300**



Fine Jewellery, Watches & Silver, 18th Jun, 2026 09:30

- 236 A George III silver coffee pot, by Charles Wright, London 1769, of baluster form, with domed cover with twisted finial, treen scroll handle, on a stepped ring foot, 25.5 cm high, 715.5 grams (23.00 ozt). **£400-600**



- 237 A pair of George III silver salvers by John Crouch I & Thomas Hannam, London 1782, of circular shape with beaded border, on three ball and claw feet, 15.5 cm wide, total weight of items 390.5 grams (12.55 ozt). (2) **£600-800**



- 238 A George III silver tankard, London 1770, by J S (unidentified), of baluster form with scrolled handle on a flared foot, body with later floral repoussework, framing a cartouche to the front with a presentation inscription "Presented by the Non-commissioned Officers and Privates of the F. Troop of the Queen's Own O.Y.C To Sergeant Major Farmer, a good soldier & a kind hearted man", 12.5cm high, 208.0 grams (6.68 ozt). **£200-300**



- 239 A pair of George III silver cast candlesticks, London 1762, by William Cafe, decorated with floral scrolls all over, with detachable sconces, on hexagonal bases, 30.0 cm high, 1881.5 grams. (60.49 ozt). (Qty: 2) **£400-600**



- 240 A large silver tankard, by L&S, London 1778, of baluster form with flared foot, with a leaf-capped scroll handle, 14.0 cm high, 405.5 grams (13.03 ozt). **£300-500**



Fine Jewellery, Watches & Silver, 18th Jun, 2026 09:30

- 241 A pair of George III silver salt cellars, London 1772, by Ann Smith & Nathaniel Appleton, of circular form embossed with floral design, on three hoof feet, hallmarks to the base, glass liners deficient, 111.9 grams. **£150-250**



- 242 A small collection of silver items; to include a Cypriot footed bowl, embossed and chased with a lion, a double-headed eagle, and the island of Cyprus, in white metal stamped S.800; a cased set of Victorian silver apostle teaspoons and a pair of sugar tongs; a cased set of Latin America themed souvenir spoons of six, marked .900, with finials of armadillo, palm tree and agua fresca; a French ham holder with filled handle decorated with holly, .925 French assay mark, in a Ordronneau fitted case; two other Continental white metal bon bon dishes, and a Dutch spoon; Total weighable 459.5 grams (14.77 ozt). **£300-500**



- 243 A Continental goblet and a cased set of silver salts; the stemmed goblet with half fluted body, supported on a flared stem with beaded border on node and foot, gilt interior, German '800' silver marks and maker's mark for Gebrüder Kühn, 16.5 cm high; the Victorian pair of salt cellars, London 1857, by Thomas Hughes Headland, squat circular form with floral repoussework and gadrooned edge, vacant cartouches to the sides, on three paw feet with lion head terminal, glass liner deficient, with a pair of matched thread and shell condiment spoons with crested handles, in fitted case; Total weight of items 501.0 grams (16.10 ozt). **£300-500**



- 244 A set of six silver-gilt kiddish cups, the stemmed cups with globular knobs and flared bases, decorated with husk swags, applied florettes, charoite cabochons and purple cubic zirconias, on textured ground, Cypriot hallmarks for silver, 15.0 cm high, total weight of items 1078.5 grams (34.67 ozt). (6) **£1,000-1,500**



- 245 A set of early 20th century Isfahan Persian (Iranian) white metal tea glass holders and a tray; the tea glass holders hand pierced and engraved with Zoroastrian motifs including the Faravahar; the shaped rectangular tray with moulded borders above a raised borders decorated with birds and foliage, the centre hand engraved with a sphinx and Royal guardian, within a wreath of roses. 41 x 32 cm 57.7ozt, 1795 grams. **£2,000-3,000**



Fine Jewellery, Watches & Silver, 18th Jun, 2026 09:30

- 246 A silver and parcel gilt limited edition goblet, London 1980, by Hector Miller for Aurum, commemorating the work of Bishops Bronescombe and Quinil in the creation of Exeter Cathedral, limited edition 39 of 500, inscription and hallmarks to the base, 16.5 cm high, 291.5 grams (9.37 oz).
No box no papers. **£300-500**



- 247 A silver and parcel gilt limited edition goblet, London 1989, by Hector Miller for Aurum, commemorating the 900th Anniversary in 1989 of the Death of Archbishop Lanfranc, limited edition 419 of 500, bowl raised on heavy cast figural stem and spreading foot, inscription and hallmarks to the base, 16.5 cm high, 365.5 grams (11.75 oz).
No box no papers. **£300-500**



- 248 A silver tea kettle on stand, London 1939, by the Goldsmiths and Silversmiths Company, of globular form with a decorative foliate band, with a domed hinged cover, equipped with a fixed curved wooden handle, chased with monogram, the stand with three foliate scroll legs and hoof feet, gross weight 1089.5 grams (35.02 oz). **£600-800**



- 249 A silver four-piece tea service, London 1956, probably by John Charles Lowe, comprising a teapot, a coffee pot, a milk jug and a twin-handled sugar bowl; the coffee pot of baluster form with a gadroon border, with a dome hinged cover and twisted finial, on flared gadrooned foot, cast shaped spout and treen scroll handle, 27.0cm high; teapot in a similar design with a squat body, milk jug and sugar bowl in conforming design equipped with leaf-capped handles; total weight of items 2254.5 grams (72.48 oz). (4)
(Qty: 4) **£1,500-2,000**



- 250 A silver three-piece tea service, Sheffield 1937, by Cooper Brothers & sons Ltd., teapot of squat octagonal form with domed cover and panelled spout, on stepped foot, fitted with composite handle and finial, a cream jug and a twin-handled sugar bowl in conforming design with leaf-capped angular handles; together with a dwarf candlestick/inkwell, of twisted lobed design with loaded base, by Wilhelm Binder, design number 118, with German assay marks for .800 silver, 9.5cm high. (4) Total weighable 1152.5 grams (37.05 oz). **£1,200-1,800**



Fine Jewellery, Watches & Silver, 18th Jun, 2026 09:30

- 251 A large two-handled silver presentation tray, Sheffield 1920, by William Hutton & Sons Ltd, of rectangular form with applied gadroon border with shell and scroll decorations, inscribed 'Presented by the officers of 5th Royal Gurkha Rifles F.F. to Ronald Duncan on the occasion of his marriage' dated 1921, 45.5 (without handles) x 37.0cm, 2353.5 grams (75.66 ozt). **£2,500-3,500**



- 252 An Arts and Crafts twin-handled silver bowl, London 1906 by Roberts & Belk Ltd., of octagonal form with flared undulating rim, pedestal stem and rim pierced with foliate design, supported on four shaped feet, presentation inscription to the front, diameter 22.0cm (excluding handles), weight 1237.9 grams (39.8 ozt). Together with a stepped octagonal stand, housed in a fitted case. **£1,500-2,500**



- 253 A silver trophy bowl, Sheffield 1930, by Cooper Brothers & Sons Ltd., of round form with moulded shell and scroll border, supported with three paw feet with foliate terminals, presentation engravings, 25.5 cm wide, 650.5 grams (20.91 ozt). **£800-1,200**



- 254 A small group of American 'sterling silver' flatware; to include six fruit knives by the Webster Company, with Neo-Classical designed filled handles and stainless steel blades; nine pickle forks by Hamilton and Diesinger, with cast cherry blossom on basketweave ground finials, engraved with initial 'M' to the back; another nine butter spreaders by Hamilton and Diesinger, scrolled floral finials with cartouche engraved with initials; Total weighable 308.5 grams (9.91 ozt). **£300-500**



- 255 A Victorian silver porringer and coin-inset cover, London 1900, by Thomas Bradbury, decorated with swirling flutes and foliate bands, on a ring foot with two scroll handles, the pull-off cover mounted with a 1675 Charles II coin to the centre, 13.5cm wide, 195.0 grams (6.26 ozt). **£200-300**



Fine Jewellery, Watches & Silver, 18th Jun, 2026 09:30

- 256 An 18th-century Prussian parcel-gilt coin beaker, with coins from various years set around the body, and a medallion from 1640 at the bottom, 10.3 cm high, 246.0 grams (7.90 ozt). **£300-500**



- 257 Two silver presentation salvers; of piecrust rim with a Celtic dragon border, both presented to Prince Georg of Denmark; the larger by Wakely & Wheeler, London 1966, with inscription dated 1969, measures 21.0cm in diameter; the smaller with inscription dated 1984, made in Birmingham 1983, 15.5cm diameter; total weight of items 598.0 grams (19.22 ozt). (2) (Qty: 2) **£300-500**



- 258 An Early 20th Century 'sterling' water pitcher by Julius Olaf Randahl, of panelled baluster form, wide flared rim and an angular handle with planished finish, engraved with stylised initials to one side, maker's mark to the base, stamped 'Hand Wrought Sterling' serial number '530', 23.5cm high, 752.0 grams (24.17 ozt). **£800-1,200**



- 259 Asprey & Co. - A silver-mounted claret jug, London 1963, the neck and spout cast with masks amongst vining foliate, hinged cover with gadrooned border and an acanthus leaf finial, glass jug engraved with fruiting vines, 32.0cm high, gross weight 1787.0 grams (57.45 ozt). **£200-300**



- 260 An Indian Colonial presentation tazza, of a round form, wide rim engraved with an armorial of the Maharaja of Jodhpur, and inscription "With thanks for your help in our War effort", on a reeded pedestal, by Hamilton & Co. (of Calcutta), 23.0 cm in diameter, 506.5 grams (16.28 ozt). **£500-700**



Fine Jewellery, Watches & Silver, 18th Jun, 2026 09:30

- 261 Asprey - A pair of silver goblets; ovoid bodies with a band of foliate engraving, knopped stem, circular spreading foot with a leaf band to base, gilded interiors, 15.0cm high, 527.2 grams (16.95ozt); together with a silver bonbon dish, on loaded base. **£300-500**



- 262 A collection of table spoons and forks; to include a set of six Imperial Russian table forks, St Petersburg 1868, by Alexander Kordes, fiddle back, finial engraved with initials 'E.P', Russian assay marks for 84 zolotnik silver, 21.0cm in length; a pair of George III Old English pattern silver table spoons, London 1797 Solomon Hougham; two English silver table spoons with various makers and dates, a Swedish double-struck Queen's pattern dessert spoon, an American 'Sterling' table fork by A. Stowell & Co., together with other silver-plated items. Total weighable 753.0 grams (24.20 ozt). **£800-1,200**



- 263 A large presentation silver salver, Sheffield 1902, by Walker & Hall, of pie crust rim with a beaded edge, floral scrollwork engravings, supported on three balls and claws feet, with later presentation inscription to the base, dated 1952, 37.5cm diameter, 1359.0 grams (43.69 ozt). **£800-1,200**



- 264 A pair of silver bowls, London 1956, by A Taite & Sons Ltd, of oval form with floral repousse design and a shaped rim, 27.5cm x 21.5cm, total weight of items 577.0 grams (18.55 ozt). (2) **£300-500**



- 265 A silver desk stand, by Hawkesworth, Eyre & Co. Sheffield 1884, of scrolling volute design, supported on three bracket feet, decorated with applied vine leaves, centred with a globular moulded glass inkwell with silver-mounted cap, 24.0cm x 16.0cm, weighable 257.5 grams. (8.27 ozt). **£200-300**



Fine Jewellery, Watches & Silver, 18th Jun, 2026 09:30

- 266 A harlequin set of silver-handled fish eaters; to include twenty-three fish forks, by various makers, Sheffield 1927-1934; twenty-four fish knives by various makers, Sheffield 1927-1934; and a pair of fish servers by William Yates, Sheffield 1928, all filled and with silver plated blades and tines; together with a wine coaster, marks indistinct; A silver 1905 Art Deco two-handed tazza cup, 120.5 grams (3.87 oz); A silver napkin ring, 22.5 grams (0.72 oz). **£250-350**



- 267 Three George III silver casters; the first example by Samuel Wood, London 1744, of the typical baluster form with reeded girdle on flared base, with foliate pierced pull-off cover with urn-shaped finial; the second by Jabez Daniell, London 1756, of similar design with a twisted finial; and another with maker's mark rubbed, London 1751; Total weight of items 292.0 grams (9.38 oz). (3). **£300-500**



- 268 Three silver christening cups; to include a Victorian mug with beaded edge and bright-cut engravings, the second with plain baluster body on flared foot, and another plain half-pint mug with gilt interior; total weight of items 375.5 grams (12.07 oz). (3).
(Qty: 3) **£400-500**



- 269 A George III silver saver, London 1777, by John Crouch I & Thomas Hannam, of circular form with a pierced lace border with floral and twisted rope edge, on four bracket feet with similar design, with later presentation inscription "To William J. Locke, with the thanks of the Executive Committee of the VIIth International Congress of Architects, London July 1906", centred with the coat of arms for the Royal Institute of British Architects, 37.0cm in diameter, 1097 grams (35.26 oz). **£800-1,200**



- 270 Two George III silver sugar casters, both by Jabez Daniell & James Mince, 1747 and 1769, of baluster form with reeded girdle, pull-off pierced cover with urn-shaped finials, on stepped spread foot, height measures 11.5cm and 15.5cm respectively, total weight of items 198.5 grams (6.38 oz). (2). **£200-300**



Fine Jewellery, Watches & Silver, 18th Jun, 2026 09:30

- 271 A French Art Nouveau set of twelve dessert forks, shell back with intricate cast floral scrollwork design to finials, vacant cartouches to the back, French marks for .925 silver, and maker's mark 'LG', in fitted case signed Benvenisti Paris, total weight of item 348.5 grams (11.20 ozt). **£300-500**



- 272 Archibald Knox for Liberty & Co. - An Arts & Crafts 'Tudric' cast pewter ewer, design no. 028, with flared bottom with relief floral decoration, 22.5 cm high. **£200-300**



- 273 Of Judaica Interest - A parcel gilt filigree Megillah scroll holder, cylindrical body with tapering winding handle, topped with Torah crown, decorated with twisted cable and granular details, with a detachable cover for the aperture, no hallmarks, 20.0cm in length, 162.5 grams (5.22 ozt). **£200-300**



- 274 A Russian silver gilt easter egg, St. Petersburg, possibly by P. Ovchinnikov and sons, 1908-1917, of plain polished egg form, screw-on clasp and a suspension loop to the top, with hinged double doors open to reveal a gilt interior, and a detachable painted icon of Madonna and child, 88 standard mark, 7.5cm in length, 92.1 grams (2.96 ozt). **£2,500-3,000**



- 275 Omar Ramsden - An Arts & Crafts gem-set silver plaque, London 1932, of rectangular form, the panel embossed with a central crucifix above a chalice, flanked by two angels, with one swinging a thurible, border decorated with amethyst and dyed chalcedony sugarloaf, signed 'Omar Ramsden Me Fecit', 34.0cm x 26.5cm, 965.0 grams (31.02 ozt). **£2,500-3,500**



Fine Jewellery, Watches & Silver, 18th Jun, 2026 09:30

- 276 Omar Ramsden. A large silver altar cross, London 1932; the fleury cross surmount, with a sunburst to centre, and an applied quatreform cartouche chased with the Paschal Lamb, and fleur-de-lys terminals with Tudor roses; above a substantial octagonal knob set with eight sugar loaf amethyst cabochons; the tapering hand-hammered, panelled stem with incuse corners and set with two chrysoprase cabochons between moulded girdles. The foot with a presentation inscription reading:
 'To the Glory of God and in memory of Ellen Berga Tufnell 1867-1930.'
 The underside set with a wood panel which attaches to the baize lined wood base.
 81cm high overall



Ellen Bertha Gubbins, daughter of Rev. Richard Shard Gubbins, Rector of Upham in Hampshire, married Lt.-Col. Edward Tufnell in 1891. Edward Tufnell (1848-1909) was from a political family. His grandfather was the developer of Tufnell Park in London.
£5,000-7,000

- 277 Omar Ramsden and Alwyn Charles Ellison Carr - An Arts and Crafts silver sanctuary lamp, London 1906, of Ottoman-style mosque lantern form, the coronet hanger composed of fleur-de-lis and cross motifs, six chains connecting a central ring of conforming design, the lantern holder of ogee shape, decorated with a band of Gothic arches and scrolling grape vine brackets, each hanging a pointed berry caging an amethyst bauble, base suspending a cruciform pendant, 105.0cm high x 20.0cm diameter approx, weight 2548.6 grams (81.93 ozt) approx.
£6,000-8,000



- 278 A Georg Jensen 'Continental/Antik' pattern silver canteen for eight, London 2004-2010; to include two serving spoons, a pair of salad servers, eight dessert spoons, eight tablespoons, eight oval bowl soup spoons, eight table knives with stainless steel blades, eight dessert knives with stainless steel blades, eight table forks, eight fish forks and eight dessert forks; Total weighable: 2662.5 grams (85.60ozt). **£5,000-7,000**



- 279 Tiffany & Co. - A collection of mismatched flatware, to include a small collection of 'Trefid' (?) pattern comprising four pastry forks, four table forks, a tablespoon and four teaspoons; a table fork, table knife, spoon and teaspoon in Shell and Thread pattern; four table knives with pistol handles; and three 'Faneuil' table forks; total weighable 1168.5 grams. (37.56 ozt).
£1,200-1,800



Fine Jewellery, Watches & Silver, 18th Jun, 2026 09:30

- 280 A cased silver canteen of 'Art Deco' pattern for twelve places, by Robbe & Berking, German assay marks and Birmingham import marks 1993; housed in a three-drawer cabinet, 133 pieces total weighable (excluding knives with filled handles) 6,494.5 grams (208.80 ozt).

To include:

Twelve fish knives

Twelve fish forks

Four serving spoons

A large serving spoon

A pair of salad servers

A cake server

A fish server

Twelve table knives (with filled handles)

Twelve table spoons

Twelve table forks

A butter knife

A butter spreader

A pair of meat carvers (with filled handles)

Twelve dessert forks

Twelve dessert spoons

Twelve dessert knives (with filled handles)

Twelve teaspoons

Twelve coffee spoons **£6,000-8,000**

- 281 A part-canteen of dognose pattern silver cutlery, London 1928 & 1929, Francis Higgins & Son Ltd, comprising forty-five table spoons, sixty-three dessert spoons, seventy-two table forks and forty-six pastry forks, the forks featuring a family crest on the finial detailing a thistle motif, the spoon handles engraved with scrolling foliate motifs, a coat of arms, birds amongst foliate, thistle motif to back, the rattail bowls engraved with conforming decorations, 226 pieces total, total weighable 18,867.9 grams (606.61 ozt) as well as a silver-plated table spoon.

£12,000-18,000

